

ADDENDUM #1

1.1 PROJECT INFORMATION

- A. Project Number: M&F-2011-190/191
- B. Project Title: Air Curtain Replacement & Resource/Clean Room
- C. Project Location: Spokane Transit Authority Maintenance Facility
1229 W Boone Avenue
Spokane, WA 99201
- D. Client Agency: Spokane Transit Authority

1.2 NOTICE TO BIDDERS

- A. The following clarifications, changes, additions, and/or deletions are considered as **Addendum #1**, and are hereby made a party of the contract documents. All bidders are required to base their bid upon the information furnished in this addendum and as required in the contract documents. The Contractor is required to acknowledge **Addendum #1** in their company proposal. Failure to acknowledge addendum on the bid form will result in the bid proposal being declared non-responsive.
- B. The Bidder shall acknowledge receipt of this Addendum in the appropriate space on the Bid Form.
- C. The date for receipt of bids is **changed by this Addendum** the new date is **August 16, 2012** at the same time and location.

1.3 ATTACHMENTS

- A. This Addendum includes the following attached Documents:
 - 1. Documents:
 - a. Pre-Bid Walkthrough Attendance ListJuly 18, 2012(new)
 - b. Pre-Bid Walkthrough Meeting MinutesJuly 18, 2012(new)
 - c. Substitution Request Reference Section 260500 General Electric Requirements
 - 2. Specifications
 - a. 004213 STA Bid Proposal FormJuly 23, 2012 ... (re-issue)
 - b. 004215 STA Bid Response (page 3 only)July 23, 2012 ... (re-issue)
 - c. 012300 AlternateJuly 23, 2012(new)
 - d. 083113 Access Doors and FramesJuly 23, 2012(new)
 - e. 083300 High Speed Roll Up DoorsJuly 23, 2012(new)
 - 3. Drawings
 - a. MSI-01 Revised Rooftop Heating/Cooling Unit ScheduleJuly 23, 2012 (rvsd)

1.4 REVISIONS TO SPECIFICATION SECTIONS

- A. DELETE: Section 004213 Bid Proposal Form, dated June 29, 2012
ADD: Section 004213 Bid Proposal Form, dated July 23, 2012.
- B. DELETE: Section 004215 Bid Response Page 3, dated June 29, 2012.
INSERT: Section 004215 Page 3, dated July 23, 2012, into the existing Bid Response Section in lieu of the original page 3 of the Section.

- C. ADD: Section 012300 Alternates
- D. ADD: Section 083113 Access Doors and Frames
- E. ADD: Section 083300- Alternate #1- Dynaco M2 High Speed Roll Up Door.
- F. Section 260500 General Electrical Requirements: Approved Equals
LITHONIA LTG MODEL No. 2SP8 G 2 32 A12125 277 ADEZ
See attached substitution request: JC Wright.

1.6 REVISIONS TO DRAWINGS SHEETS

- A. Sheet A1.01 – FLOOR PLANS AND DOOR SCHEDULE - DOOR SCHEDULE
Door 03:
DELETE: Door Type C
REVISE TO: Door Type D.
- B. Sheet A1.01 – FLOOR PLANS AND DOOR SCHEDULE - DOOR SCHEDULE
CLARIFICATION: A Door is high speed rolling door - width as indicated on drawings.
B and C doors are hollow metal doors. C door has tempered glass lite.
D door is polyethylene door with polycarbonate glazing.
All man doors to have hollow metal door frames- width indicated on floor plans.
- C. Sheet A 1.02 MEZZANINE AND REFLECTED CEILING PLANS - Room Finish Schedule:
Room 200 Mezzanine:
ADD KEYED NOTES: The existing concrete floor is to be cleaned, ground and polished with floor grinding equipment used by the terrazzo industry. No additional flooring materials other than patches to the concrete are required. This is to be a polished concrete floor only with sealer applied.
- D. Sheet A 1.02 MEZZANINE AND REFLECTED CEILING PLANS - Room Finish Schedule:
1st Floor Maintenance Bay – East Wall:
DELETE: SS
ADD: Patch wall and spot paint to match existing.
- E. Sheet M0.00 ROOFTOP HEATING/COOLING UNIT SCHEDULE. Change HVAC-1 to read as follows: DX Cooling (1) SEER 17.5, GAS HEATING (2) Output (MBH) 64, HTG Stages 1, Efficiency 78% ELECTRICAL Unit MCA 11.4, Approximate OP. Weight (LBS) (3) 606, BASIS OF DESIGN MFR./MODEL TRANE/YHCO37E4RM.
See attached sheet: **Add MSI-01**
- F. Sheet E1.20 – SECOND FLOOR ELECTRICAL PLAN:

REVISE NOTE (located in the right hand corner of the sheet) to read: Provide raceway for data outlets. The owner will install the cable and terminations. The contractor is to provide device boxes, cover plates and raceway with pull cord from data box to stub-out in data room 226. Coordinate with the owner for stub-out location in the data room. The data/comm room 216 location is on the mezzanine approximately 78 feet east and 174 feet north of the mezzanine new resource room.

END OF ADDENDUM #1

SIGN-IN

PLEASE PRINT. ALL INFORMATION IS OPTIONAL.

	NAME	COMPANY	PHONE &/OR EMAIL
1	Elise French	Quality Contractors	208 596 7890
2	MAYNARD DAVIS	Western Star Power	509-892-0600 wsc@AIR-PIPEZ.COM
3	GARY MANN	PRO MECHANICAL SERVICES	483-1305 gmann@pro-mech.com
4	RAY CORNER	CORNER ARCH. Co.	363-1039
5	RAY CORNER	CORNER ARCHITECTURE	363-1039
6	DAREN DOUBEN	CENTERLINE	534-0909
7			
8			
9			
10			
11			
12			
13			
14			
15			
16			
17			
18			
19			
20			

This Page Intentionally Blank

SPOKANE TRANSIT

PRE-BID MEETING **NOTES** FOR THE

Air Door Replacement and Resource/Clean Room
M&F 2011-190/191

Date: July 18, 2012

Time: 10:00 a.m. - 11:00 a.m.

Meeting Location: Spokane Transit – Meeting Room Southside

1. SIGN IN (**PDF of sign in sheet in project file, & sent to Cortner**)

2. INTRODUCTIONS

Meeting facilitator: Jacque Tjards, Purchasing Manager

3. GUIDELINES

a. Questions and comments will be accepted during the meeting.

i. **Permitting: Bldg permit and public utility hookup fees are to be paid for and obtained by the Contractor and submitted to STA for direct reimbursement. Cost not included in Bid Price, Section 02113(1.7)(B). All other permits are the responsibility of the contractor and are to be included in the bid price, Section 007200(5.02)(A)**

b. Remarks, clarifications, or corrections to the IFB during the meeting shall not change the terms of the solicitation.

c. A **written amendment** will be issued following the meeting stating any clarifications, corrections, or additions to the solicitation. All prospective Bidders and Plan Centers who received the original IFB will receive the amendment.

d. **All communications** shall be directed to Don Reimer dreimer@spokanetransit.com / 509-325-6035 as listed in the bid document. In his absence, you may also contact Jessica Charlton at jcharlton@spokanetransit.com / 509-325-6049. **Please do not contact the architects or engineers directly. The goal is to get consistent information to all prospective Bidders.**

e. Reminder of Prevailing Wage, bonding requirements, **Rule 171, 120 days to complete (negotiable if can support that the time allotted is insufficient to do the work)**

4. TOUR OF THE WORK AREA: FIRST FLOOR MAINTENANCE FACILITY & MEZZANINE LEVEL:

a. Please direct any questions during the tour to Bruce Curran, STA Facilities Foreman.

b. Items to review based on questions

i. Check plans regarding relocation of radiant heater

ii. Check plans regarding power requirements/tie-in locations for new maintenance doors.

This Page Intentionally Blank

Name of Firm (Contractor submitting bid): _____

**SPOKANE TRANSIT AUTHORITY
1230 W. BOONE AVE
SPOKANE, WASHINGTON 99205**

BID PROPOSAL – Air Curtain Replacement and Resource/Clean Room

This project qualifies as “public road construction” and is eligible for a sales tax exemption under Rule 171, WAC 458-20-171. (See spec section 012900.APP1)

In compliance with the contract documents, the following bid proposal is submitted:

Base Bid	
	\$
(Please print dollar amount in space above)	(Include Washington State Sales Tax in accordance with Rule 171)
Bid Alternates <i>(Specify whether additive or deductive)</i>	
Provide and install the Dynaco M2 rolling door in lieu of the Albany UltraFast high speed industrial door.	\$
	(Include Washington State Sales Tax in accordance with Rule 171)
Unit Prices <i>(Specify whether additive or deductive)</i>	
{There are no bid unit prices on this project}	\$ N/A
	(Include Washington State Sales Tax in accordance with Rule 171)

For Verification of Appropriate Sales Tax Calculation:

Washington State Sales Tax (WSST) in accordance with Rule 171 must be included in bid, but not listed as a separate line item. For verifications of appropriate calculation of sales tax, disclose the following:

Amount of WSST included in Base Bid	\$
Amount of WSST included in Alternate	
Amount of WSST included in Unit Price	\$ N/A
	In accordance with Rule 171

The Owner reserves the right to accept or reject any or all bid prices within sixty (60) days of the bid date.

Time for Completion

The undersigned hereby agrees to complete all the work under the Base Bid (and accepted alternates) within **120 calendar days** after the date of Notice to Award as detailed in Section 011000 – Summary.

Apprenticeship Requirements

The apprentice labor hours required for this project are zero (0) % of the total labor hours. The undersigned agrees to utilize this level of apprentice participation.

Liquidated Damages

The undersigned agrees to pay the Owner as liquidated damages the sum of \$500 for each consecutive calendar day that is in default after the Contract Time. Liquidated damages shall be deducted from the contract by change order.

Receipt of Addenda

Receipt of the following addenda is acknowledged:

Addendum No. 1 _____ Addendum No. 2 _____ Addendum No. 3 _____ Addendum No. 4 _____

Name of Firm NOTE: If quotation is from a corporation, write State of Incorporation; if a partnership, give full names & addresses of all

Address

City, State, Zip Code

Signed by

Official Capacity

Print Name

Date

E-mail address

Telephone No.

Fax No.

Contractor's License No., State of

Federal Tax ID #

Employment Security Dept. No.

END OF BID PROPOSAL FORM

BID AMOUNTS:

BASE BID:

A. Bid Amounts All bid amounts are to be written out in words as well as figures. **Total for all work, including Washington State Sales Tax.**

DESCRIPTION	FIGURES	WRITTEN
Air Curtain Replacement And Resource/Clean Room	\$ _____	_____ dollars

B. Deduct Alternate:

Amount to be deducted from the base bid for providing and installing complete in every way the Dynaco Power N2 high speed interior doors in lieu of the Albany Door System UltraFast high speed industrial door specified as base bid.

\$ _____ dollars

Bidder agrees and understands that any additional taxes, permit fees, prevailing wage filing fees, etc. applicable to this project, have been included in the above listed bid items.

PRODUCTS/BRANDS OTHER THAN SPECIFIED IN BID DOCUMENT TO BE USED:

NOTE: Any deviation from technical specifications provided in bid document must be approved in advance by Owner.

Bidder Name: _____

This Page Intentionally Blank

SECTION 012300 - ALTERNATES

PART 1 - GENERAL

1.1 RELATED DOCUMENTS

- A. Drawings and general provisions of the Contract, including General and Supplementary Conditions and other Division 01 Specification Sections, apply to this Section.

1.2 SUMMARY

- A. Section includes administrative and procedural requirements for alternates.

1.3 DEFINITIONS

- A. Alternate: An amount proposed by bidders and stated on the Bid Form for certain work defined in the Bidding Requirements that may be added to or deducted from the base bid amount if Owner decides to accept a corresponding change either in the amount of construction to be completed or in the products, materials, equipment, systems, or installation methods described in the Contract Documents.
 - 1. Alternates described in this Section are part of the Work only if enumerated in the Agreement.
 - 2. The cost or credit for each alternate is the net addition to or deduction from the Contract Sum to incorporate alternate into the Work. No other adjustments are made to the Contract Sum.

1.4 PROCEDURES

- A. Coordination: The Contractor shall provide all materials and associated work necessary to complete the Work of each respective described Alternate. All bid prices shall include adjustments in the work of all trades as may be necessary to completely and fully integrate the Alternate Work into the Project
 - 1. Include as part of each alternate, miscellaneous devices, accessory objects, and similar items incidental to or required for a complete installation whether or not indicated as part of alternate.
- B. Contractor shall notify the A/E and Owner when work designated as an allowance or unit price is to be performed. Contractor and Owner's representative shall jointly measure the affected work and confirm in writing the agreed upon quantities prior to proceeding with the work. Contractor shall not receive credit or payment for work designated as a unit price if the Contractor fails to follow this process.
- C. Notification: Immediately following award of the Contract, notify each party involved, in writing, of the status of each alternate. Indicate if alternates have been accepted, rejected, or deferred for later consideration. Include a complete description of negotiated modifications to alternates.
- D. Execute accepted alternates under the same conditions as other work of the Contract.

- E. Schedule: A schedule of alternates is included at the end of this Section. Specification Sections referenced in schedule contain requirements for materials necessary to achieve the work described under each alternate.

PART 2 - PRODUCTS (Not Used)

PART 3 - EXECUTION

3.1 SCHEDULE OF ALTERNATES

A. Alternate No. 1

1. Base Bid:
 - a. No work
2. Alternate:
 - a. Provide and install complete in every way Dynaco N2 high speed rolling door in three (3) openings of the STA Maintenance Building in lieu of the Albany UltraFast High Speed Industrial Door indicated.

END OF SECTION 012300

SECTION 083113 - ACCESS DOORS AND FRAMES

PART 1 - GENERAL

1.1 RELATED DOCUMENTS

- A. Drawings and general provisions of the Contract, including General and Supplementary Conditions and Division 01 Specification Sections, apply to this Section.

1.2 SUMMARY

- A. Section Includes:
 - 1. Access doors and frames for walls and ceilings.
- B. Related Requirements:
 - 1. Section 233300 "Air Duct Accessories" for heating and air-conditioning duct access doors.

1.3 ACTION SUBMITTALS

- A. Product Data: For each type of product.
 - 1. Include construction details, **fire ratings**, materials, individual components and profiles, and finishes.

PART 2 - PRODUCTS

2.1 PERFORMANCE REQUIREMENTS

- A. Fire-Rated Access Doors and Frames: Units complying with NFPA 80 that are identical to access door and frame assemblies tested for fire-test-response characteristics according to the following test method and that are listed and labeled by UL or another testing and inspecting agency acceptable to authorities having jurisdiction:
 - 1. NFPA 252 or UL 10B for fire-rated access door assemblies installed vertically.

2.2 ACCESS DOORS AND FRAMES FOR WALLS AND CEILINGS

- A. Manufacturers: Subject to compliance with requirements, **provide products one of the following**:
 - 1. [Babcock-Davis](#).
 - 2. [J. L. Industries, Inc.; Div. of Activar Construction Products Group](#).
 - 3. [Larsen's Manufacturing Company](#).
 - 4. [Milcor Inc.](#)
- B. Source Limitations: Obtain each type of access door and frame from single source from single manufacturer.
- C. Flush Access Doors with Concealed Flanges
 - 1. Basis-of-Design Product: J.L. Industries, WB Series.
 - 2. Assembly Description: Fabricate door to fit flush to frame. Provide frame with gypsum board beads for concealed flange installation.
 - 3. Locations: Wall

4. Size: Approximate size indicated on drawings. Field measure to cover existing electrical boxes and emergency generator access box.
- 5.
6. Uncoated Steel Sheet for Door: Nominal 0.060 inch, 16 gauge.
 - a. Finish: Factory prime.
7. Frame Material: Same material as door, 16 gauge steel with 1-inch flange.
8. Hinges: Continuous.
9. Hardware: flush screwdriver operated cam.

2.3 MATERIALS

- A. Steel Sheet: Uncoated or electrolytic zinc coated, ASTM A 879/A 879M, with cold-rolled steel sheet substrate complying with ASTM A 1008/A 1008M, Commercial Steel (CS), exposed.
- B. Frame Anchors: Same type as door face.
- C. Inserts, Bolts, and Anchor Fasteners: Hot-dip galvanized steel according to ASTM A 153/A 153M or ASTM F 2329.

2.4 FABRICATION

- A. General: Provide access door and frame assemblies manufactured as integral units ready for installation.
- B. Metal Surfaces: For metal surfaces exposed to view in the completed Work, provide materials with smooth, flat surfaces without blemishes. Do not use materials with exposed pitting, seam marks, roller marks, rolled trade names, or roughness.
- C. Doors and Frames: Grind exposed welds smooth and flush with adjacent surfaces. Furnish attachment devices and fasteners of type required to secure access doors to types of supports indicated.
 1. For concealed flanges with drywall bead, provide edge trim for gypsum board securely attached to perimeter of frames.
 2. Provide mounting holes in frames for attachment of units to metal or wood framing.
 3. Provide mounting holes in frame for attachment of masonry anchors.
- D. Latching Mechanisms: Furnish number required to hold doors in flush, smooth plane when closed.

2.5 FINISHES

- A. Comply with NAAMM's "Metal Finishes Manual for Architectural and Metal Products" for recommendations for applying and designating finishes.
- B. Protect mechanical finishes on exposed surfaces from damage by applying a strippable, temporary protective covering before shipping.
- C. Steel and Metallic-Coated-Steel Finishes:
 1. Factory Prime: Apply manufacturer's standard, fast-curing, lead- and chromate-free, universal primer immediately after surface preparation and pretreatment.

PART 3 - EXECUTION

3.1 EXAMINATION

- A. Examine substrates for compliance with requirements for installation tolerances and other conditions affecting performance of the Work.
- B. Proceed with installation only after unsatisfactory conditions have been corrected.

3.2 INSTALLATION

- A. Comply with manufacturer's written instructions for installing access doors and frames.
- B. Install doors flush with adjacent finish surfaces or recessed to receive finish material.

3.3 ADJUSTING

- A. Adjust doors and hardware, after installation, for proper operation.
- B. Remove and replace doors and frames that are warped, bowed, or otherwise damaged.

END OF SECTION 083113

This Page Intentionally Blank

SECTION 083300 – ALTERNATE#1 -DYNACO M2 HIGH SPEED ROLL UP DOORS

PART 1 – GENERAL

1.01. SUMMARY

A. Included: High speed roll-up doors include, but are not limited to, following:

1. Complete operating high speed roll-up door assemblies, including hardware, operators and installation accessories, to suit door openings and operation.

B. Related Work in other sections:

1. Electrical power source; power and control wiring, conduit and final connections to pre-wired control boxes, activators and like devices as applicable
2. Field Painting
3. Opening preparation

1.02. SYSTEM DESCRIPTION

A. Codes and Standards - Meet requirements of following:

1. ASTM: American Society for Testing and Materials
2. NEMA: National Electrical Manufacturer's Association
3. UL: Underwriters Laboratories, Inc.
4. CSA

B. Design Criteria:

1. Design requirements:
 - * Ultra-Safe: door to have a flexible, durable, lightweight panel that operates in side guides and is free of rigid parts such as stiffeners, bottom bars or intermediate bars that could potentially injure users.
 - * Crash-Forgiving: door to have a flexible panel free of rigid parts that could be bent or broken and that would have to be replaced in case of a collision.
 - * Self re-inserting: curtain to immediately release from its side guides and to automatically re-insert itself after an opening cycle, simply by pushing a button.
 - * Tightly-Sealed: door to completely seal the opening, forming a near perfect barrier against draft, humidity, noise, dust, light, birds and insects.
 - * Wind-Resistant: door to resist and operate to pressure differences from 4.29 psf up to 35 psf, depending on the environment and the door type.
 - * Traffic-Compatible: door to open and close at speeds up to 8ft/sec and to adjust to limited access times. Door to REMAIN OPEN until directed to close by maintenance personnel or driver of vehicle.
 - * Low-Maintenance: door to be free of wearing parts such as stiffeners, extension or compression springs, cables, spiral cables or motor brakes.
2. Service: Each roll-up door and all accessories shall be suitable for intended service, installation conditions and like characteristics.
3. Loading: door to withstand a minimum uniform loading pressure, both positive (acting inward) and negative (acting outward), acting normal to plane and over gross area of door, of uniform static air pressure meeting requirements of ASTM E330, as follows:
 - a. Exterior Doors
 - b. Interior Doors
4. Clear Open Position: When door is in full open position, entire door, including any accessories, shall clear jambs and head of door opening. In addition, vertical-operating doors shall be of such a design

Within the framework of its policy of continuous development of its products, DYNACO preserves the right to modify the characteristics of its products and parts without prior notice.

that all of the components of the door blade are above the top of the opening's header when the door is in the full open position.

5. Electrical criteria:
 - a. General: doors to have associated electrical motors, control devices, enclosures and like equipment and devices as required meeting applicable requirements of NEMA standards for type, enclosure, function and like characteristics relative to operation, location and environment of door.
 - b. Available Electrical Power:
 1. Operators: Shall have the option of being supplied with either a 230 volts, single phase, 60 Hz power feed or a 230/460 volts, three phase, 60 Hz, power feed, except as otherwise required. Coordinate with Electrical Engineers drawings and available power.
 2. Control voltage to be 24VAC or 120VAC. Coordinate with Electrical Engineers drawings and available power.
 - c. Components:
 1. Electrical components shall be UL labeled.
 2. Control devices shall be of a design suitable for a commercial application
 3. Electrical components shall be factory wired where possible and ready for project site wiring.
 - d. Enclosures: Controllers, control devices and like items shall have enclosure types as required for space in which component is to be located as follows:
 1. General: NEMA Type 4, watertight and dust-tight, enclosure.
 - e. Control Location: Provide electrical control devices for doors on side of adjacent spaces with warmest operating temperature, except for exterior doors or as otherwise required.

1.03 QUALITY ASSURANCE

- A. Product qualifications: provide roll-up doors indicated under same category, each as a complete unit, including hardware, accessories and installation components, produced by one manufacturer for the entire work.
- B. Installer qualifications: an authorized installer of door manufacturer shall install roll-up doors. Installer shall maintain a service center with parts inventory and maintenance personnel trained by door manufacturer.

1.04. SUBMITTALS

- A. Product Data: Submit product specifications, technical data and installation instructions of manufacturer for each roll-up door and accessories. Include complete description of each type door control and operation system.
- B. Shop drawings: Submit shop drawings for special components and installations that are not fully detailed by manufacturer. Provide a schedule of doors using same reference designation as indicated on Drawings.

1.05 PRODUCT HANDLING

- A. General: Deliver, store and handle materials meeting instructions and recommendations of manufacturer.
- B. Packaging: Deliver doors in an enclosed water tight heat shrink wrap or wooden crate to provide protection during shipment, handling and storage. Door identification shall be marked on outside of each crate.
- C. Storage: Store under protective cover and off ground or floor.

1.06 MAINTENANCE

- A. Maintenance Data: Furnish operating and maintenance data for roll-up doors and accessories. Include instructions for operation, adjustment, maintenance, including cleaning and repair, product data of manufacturer for each material and component, and schedules and parts lists.

Within the framework of its policy of continuous development of its products, DYNACO preserves the right to modify the characteristics of its products and parts without prior notice.

- B. Instructions: Provide instructions and demonstrations to designated personnel of Owner covering operation, adjustments and maintenance of roll-up doors. Furnish services of an authorized and qualified representative of door manufacturer to provide instructions and demonstrations.

1.07 WARRANTY

- A. Coverage: Contractor, installer and manufacturer shall sign Warranty.
B. Time period: Entire door limited warranty for 1 year on material – Extended limited warranty time period for motor to 5 years and curtain to 5 years for manufacturer's defects.

PART 2 – PRODUCT

2.01 VERTICAL FABRIC ROLL-UP DOORS – ELECTRIC OPERATOR

DOORS SHALL BE HIGH SPEED, ELECTRICALLY POWERED FABRIC ROLL-UP DOORS AS MANUFACTURED BY DYNACO USA, INC. OR APPROVED EQUAL INCLUDE THE FOLLOWING DEPENDING ON OPERATING CONDITIONS

DOOR TYPE: POWER M2

Designed for inside or outside environment.

To resist and operate at pressures up to:

Width (ft)	Up to 7'	8'	9'	10'	11'	12'	13'	14'	15'	16'	17'	18'
Pressure (lbs/ft ²)	23.89	20.90	18.58	16.72	15.20	13.93	12.86	11.94	11.15	10.45	9.84	9.29
Wind speed* (mph)	95	90	85	80	75	72.5	70	67.5	65	63.5	62	60

* wind speed is indicative, not including any multiplication coefficients taking into account the configuration of the building.

... without the use of any wind bars either pressing against the fabric or attached onto the fabric. Also the door is to be able to handle these conditions without the use of a solid bottom beam.

Standard opening and closing speed : 96" /sec – optional speeds available
Door to be gear driven, push-pull movement , with flexible soft bottom design.

- A. Door panel fabric to be of a minimum weight of 27 oz/sq.yd. polyvinylchloride (PVC) fabric. Color to be selected from the full range of standard colors: brown, yellow, gray, blue, red, green, orange, white or black by the architect & owner..
- B. SELF-RE-INSERTING: fabric door panel must release immediately upon impact from side guides without tearing the fabric. After a collision and upon activation the door panel will automatically reinsert itself into the structural channels of 3 1/8" X 1 5/8" X 1/8" side guides with inner side guides of polyethylene (PE-UHMW1000); outer section 7/8" side covers included..
- C. Cover for side frames shall remain in place at all times. Doors that require side covers to be unfastened and opened to reset a breakaway feature will not be allowed.
- D. SELF-RE-INSERTING feature must be totally operational in all stages of the door's opening and closing cycle as well as be independent of the driving direction of the vehicle.
- E. SEALING: door has to provide barrier against wind, humidity, noise, dust, light, birds or insects. Therefore the sealing on both sides of the door has to be achieved with the panel held in a continuous way in the

Within the framework of its policy of continuous development of its products, DYNACO preserves the right to modify the characteristics of its products and parts without prior notice.

side guides. The door must have on top a flexible omega-shaped flap pushing against a header profile and beneath a flexible bottom flap adapting itself to the irregularities of the floor.

- F. LOW MAINTENANCE: the door shall be free of wearing parts such as stiffeners, traction- or compression springs, cables, straps, spiral cables, motor brakes and mechanical limit switches.
- G. Provide electric motor assembly of design, type, size and capacity as determined and furnished by door manufacturer for size, weight, performance function and other characteristics of the door. See electrical drawings for available power. Operators using brakes and clutches to stop door are not allowed. Operator to be controlled by a variable speed drive.
- H. Electric control panel to be a NEMA 4 rated enclosure, fully assembled and ready for connection. All components and the layout of such components should be UL listed. Control panel should contain a rotary disconnect switch, an emergency stop push button and an open/close reset push button.
- I. Reversing infrared photocell with a transmitter and receiver to be provided and located within the door side frame.
- J. Control box to contain a Solid State electronic controller – Circuit board design technology, as well as an Absolute Encoder receiver.

2.02 OPTIONS SELECTED:

- A. Vision banner transparent PVC, thickness 1/12", Width door x H 1' 6 1/2": window center line at \pm 5'3" above the floor.
- B. Supplementary infra-red photocell placed at a pre-determined height from the floor, type transmitter-receiver (a limit switch disables the photocell before the bottom of the door panel arrives at the height of the supplementary photocell).
- C. Frame cover in stainless steel (AISI 304).
- D. Motor cover in galvanized steel.
- E. Drum hood in galvanized steel.
- F. Shafts and drum in stainless steel (AISI 304).
- G. Frame and covers painted in a special color.
- H. Control Box in stainless steel (AISI 304), H 20" x W 20" x D 8". Degree of protection: NEMA 4X, with open push button and emergency stop; after unlocking emergency stop, the operation of the door is reset by pushing the Reset button.
- I. Control Box which gives a warning before closing: two orange lights go on when the door opens, after the opening of the door they go off; they go on again \pm 2 seconds (adjustable) before the door closes until the door is completely closed.
- J. Orange flashing light NEMA 4 (waterproof) which works during the opening and closing of the door.
- K. Traffic lights: 1 pair of lights, \varnothing 5.90", voltage: 120V.
- L. High speed opening: opening or 8 ft/s, closing 4ft/s, according to the type of door.
- M. Low speed closing: opening 4ft/s, closing 2ft/s (incompatible with high speed opening).

PART 3 – EXECUTION

3.01 EXAMINATION

- A. General: Examine substrates and conditions under which roll-up doors are to be installed for compliance with specifications and to determine if conditions affecting performance of roll-up doors are satisfactory. Do not proceed with work until unsatisfactory conditions have been resolved.

3.02 INSTALLATION

- A. General: Install roll-up doors meeting specifications, as indicated by final reviewed submittals for work and meeting instructions and recommendations of door manufacturer.
- B. Details: Install roll-up doors, jamb guides and operating equipment complete with necessary hardware, jamb and mold strips, anchors, inserts and supports.

END OF SECTION 083300

Within the framework of its policy of continuous development of its products, DYNACO preserves the right to modify the characteristics of its products and parts without prior notice.

Spokane Transit Authority
Air Curtain Replacement and Resource/Clean RoomSection 006324.F (Reference Section 012500)
Substitution Request (During the Bidding Phase)

Section 004525 - Substitution Request (During the Bidding Phase)

Project: STA-AIR CURTAIN REPLACEMENT
AND RESOURCE/ CLEAN ROOM

Substitution Request Number: _____

From: _____

To: L & S ENGINEERING

Date: _____

CAC ARCHITECT

A/E Project Number: _____

Re: _____

Contract For: _____

Specification Title: GENERAL ELECTRICAL

Description: _____

Section: 260500

Page: _____

Article/Paragraph: _____

Proposed Substitution: COMPETITIVE BID

Manufacturer: LITHONIA LTG Address: CONYERS GA

Phone: 770-922-9000

Trade Name: JCWRIGHT LIGHTING INC

Model No.: 2SP8G 2 32 A12125 277 ADEZ

Attached data includes product description, specifications, drawings, photographs, and performance and test data adequate for evaluation of the request; applicable portions of the data are clearly identified.

Attached data also includes a description of changes to the Contract Documents that the proposed substitution will require for its proper installation.

The Undersigned certifies:

- Proposed substitution has been fully investigated and determined to be equal or superior in all respects to specified product.
- Same warranty will be furnished for proposed substitution as for specified product.
- Same maintenance service and source of replacement parts, as applicable, is available.
- Proposed substitution will have no adverse effect on other trades and will not affect or delay progress schedule.
- Proposed substitution does not affect dimensions and functional clearances.
- Payment will be made for changes to building design, including A/E design, detailing, and construction costs caused by the substitution.

Submitted by: JANET STOLZ

Signed by: _____

Firm: JCWRIGHT LIGHTING INC

Address: P.O. BOX 11968

SPOKANE WASHINGTON 99212

Telephone: 509 535 0098

A/E's REVIEW AND ACTION

- ☒ Substitution approved - Make submittals in accordance with Specification Section 012500.
- ☐ Substitution approved as noted - Make submittals in accordance with Specification Section 012500.
- ☐ Substitution rejected - Use specified materials.
- ☐ Substitution Request received too late - Use specified materials.

Signed by: 

Date: 19 July 2012

Supporting Data Attached: ☐ Drawings☒ Product Data☐ Samples☐ Tests☐ Reports☐

jcwrightlighting

Project: AIR CURTAIN REPLACEMENT AND RESOURCE CLEAN ROOM
Contents - July 17, 2012

Type	Factory	Description
F1	Lithonia Lighting	2SP8 G 2 32 A12125 277 ADEZ

Submitting Agency: jcwright-lighting phone: 509-535-0098	Description: 2SP8 G 2 32 A12125 277 ADEZ Project: AIR CURTAIN REPLACEMENT AND RESOURCE CLEAN ROOM Notes:	Type: F1
---	--	-----------------



FEATURES & SPECIFICATIONS

INTENDED USE — Specification premium, high performance, static T8 luminaires provide general illumination for recessed applications; ideal for restricted plenum spaces. Certain airborne contaminants can diminish integrity of acrylic. [Click here for Acrylic Environmental Compatibility table for suitable uses.](#)

ATTRIBUTES — Designed exclusively for use with T8 lamps, electronic ballasts and sockets.

CONSTRUCTION — Smooth hemmed sides and smooth, inward formed end flanges for safe handling. Lighter weight fixture allows safe, easy installation.

Standard steel door frame has superior structural integrity with premium extruded appearance and precision flush mitered corners. Steel door allows easy lens replacement without frame disassembly (for lenses up to .156" thick). Powder-painted, steel latches provide easy, secure door closure.

Superior mechanical light seal requires no foam gasketing. Integral T-bar clips secure fixture to T-bar system. Housing formed from cold-rolled steel. Acrylic shielding material 100% UV stabilized. No asbestos is used in this product.

US PATENTS: 6,210,025; 6,231,213; 6,213,625; 2,288,471.

FINISH — Five-stage iron-phosphate pretreatment ensures superior paint adhesion and rust resistance. Painted parts finished with highly reflective matte white enamel.

OPTICAL — A12 lens features reverse apex technology for superior lamp obscuration and improved visual comfort.

ELECTRICAL — Standard ballast is electronic, thermally protected, resetting, Class P, HPF, non-PCB, UL Listed, CSA certified ballast, universal voltage and sound rated A.

Luminaire is suitable for damp locations. AWM, TFM or THHN wire used throughout, rated for required temperatures.

LISTING — Standard: UL. Optional: Canada — CSA or cUL; Mexico — NOM.

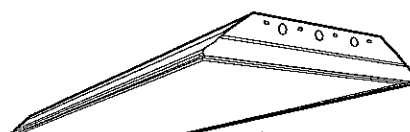
WARRANTY — 1-year limited warranty. Complete warranty terms located at www.aquitybrands.com/CustomerResources/Terms_and_conditions.aspx

Note: Specifications subject to change without notice.

Catalog Number
Notes
Type

Specification Premium T8 Troffer

SP8 2'X4'



2, 3, 4 or 6 Lamps
T8



Specifications

Length: 48 (1218)

Width: 24 (609)

Depth: 3-11/16 (94)

Weight: 22 lbs (9.9 kg)



All dimensions are inches (millimeters).

ORDERING INFORMATION

For shortest lead times, configure products using bolded options.

Example: 2SP8 G 3 32 A12 MVOLT 1/3 GEB10IS

2SP8	G	2	32		A12125	277	ADEZ
Series	Trim type	Number of lamps	Lamp type	Door frame	Diffuser type	Voltage	Options
2SP8 2' wide	G Grid F Overlapping flanged	2 3 4 6 Not included	32 32W T8 (48")	(blank) Flush steel, white FN Flush aluminum, natural FM Flush aluminum, matte black FW Flush aluminum, white RN Regressed aluminum, natural RM Regressed aluminum, matte black RW Regressed aluminum, white	A12 #12 pattern acrylic A12125 #12 pattern acrylic, .125" thick RA125 #12 pattern acrylic, .125" thick, reverse apex A19 #19 pattern acrylic, .156" thick A15 #15 pattern acrylic, .2" thick PC1S 1/2" x 1/2" x 1/2" plastic cube louver, silver PC2S 1-1/2" x 1-1/2" x 1" plastic cube louver, silver w/ flange PC3S 3/4" x 3/4" x 1/2" plastic cube louver, silver	120 277 347' MVOLT* Others available	1/4 One 4-lamp ballast 1/3 One 3-lamp ballast GEB10IS Electronic ballast, <10% THD, instant start GEB10PS Electronic ballast, <10% THD, programmed start GEB10RS Electronic ballast, <10% THD, rapid start EL Emergency battery pack (nominal 300 lumens) EL14 Emergency battery pack (nominal 1400 lumens) GLR Internal fast-blow fuse ¹ GMF Internal slow-blow fuse ¹ LST Tandem-wired fixture pairs (shared ballasts) PWS1836 6' prewire, 3/8" dia., 18-gauge, 1 circuit PWS1846 6' prewire, 3/8" dia., 18-gauge, 2 circuit LP735 Lamped, 700-series, 3500K LP_ Lamped, specify lamp type and color JP Palletized and stretch-wrapped without individual cartons; grid trim only CSA CSA Certified NOM NOM Certified CP Chicago Plenum

NOTE:

1. Not available with GEB10PS.
2. MVOLT standard for 120-277V applications, 50-60 hz operation. Some options require voltage specified.
3. Must specify voltage 120 or 277V.

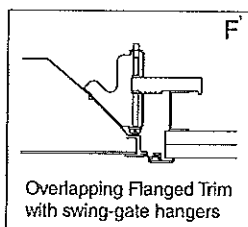
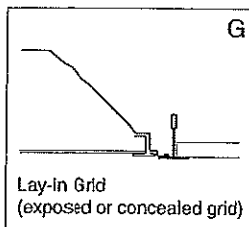
ADEZ= ADV. MARK 10 DIMMING BALLAST

Submitting Agency: jcwright lighting phone: 509-535-0098	Description: 2SP8 G 2 32 A12125 277 ADEZ Project: AIR CURTAIN REPLACEMENT AND RESOURCE CLEAN ROOM Notes:	Type: F1
---	---	---------------------------

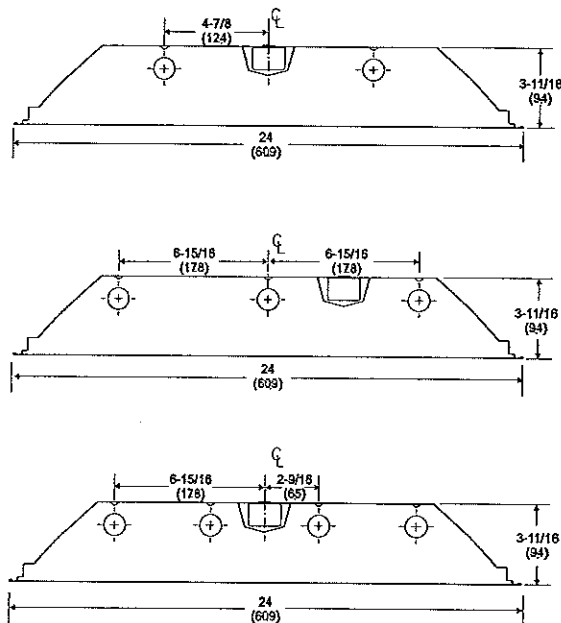
SP8 2'x4' Static T8 Troffer

MOUNTING DATA

Continuous row mounting of flanged units requires CRE and CRM trim options (see Options).



DIMENSIONS



NOTE:

- 1 Recommended rough-in dimensions for F-trim fixtures 24"x48". (Tolerance is +1/4"-0"). Swing-gate range 1-3/16" to 3-15/16". Swing-gate span 23-3/8" to 26-11/16". Fixture swing-gate points require additional 9/16" over nominal fixture height.

PHOTOMETRICS

Calculated using the zonal cavity method in accordance with IESNA LMH1 procedure. Floor reflectances are 20%. Lamp configurations shown are typical. Full photometric data on these and other configurations available upon request.

2SP8 2 32 A12*

Report LTL7525

Lumens per lamp - 2850 - Lum. eff. - 85.5%

S/MH (along) 1.3 (across) 1.4

Coefficient of Utilization

Ceiling	80%				70%				50%			
	20%	50%	80%	100%	20%	50%	80%	100%	20%	50%	80%	100%
0	102	102	102	99	99	99	95	95	95	95	95	95
1	94	90	87	92	88	85	85	82	80	78	76	76
2	86	80	74	84	78	73	75	71	68	66	64	64
3	79	71	64	77	70	64	67	62	58	56	54	54
4	73	63	56	71	62	56	60	55	50	48	46	46
5	67	57	50	66	56	49	54	48	44	42	40	40
6	62	52	44	61	51	44	49	43	39	37	35	35
7	58	47	40	57	46	40	45	39	34	32	30	30
8	54	43	36	53	42	36	41	35	31	29	27	27
9	51	39	33	49	39	33	38	32	28	26	24	24
10	47	36	30	46	36	30	35	29	25	23	21	21

Zonal Lumens Summary

Zone	Lumens	%Lamp	%Fixture
0-30	1541	27.0	31.6
0-40	2571	45.1	52.7
0-60	4192	73.5	86.0
0-90	4874	85.5	100.0
90-180	0	0	0
0-180	4874	85.5	100.0

2SP8 3 32 A12*

Report LTL7492

Lumens per lamp - 2850 - Lum. eff. - 83.6%

S/MH (along) 1.3 (across) 1.4

Coefficient of Utilization

Ceiling	80%				70%				50%			
	20%	50%	80%	100%	20%	50%	80%	100%	20%	50%	80%	100%
0	100	100	100	97	97	97	93	93	93	93	93	93
1	92	88	85	90	86	83	83	80	78	76	74	74
2	84	78	73	82	77	72	74	70	66	64	62	62
3	78	70	63	76	68	62	66	61	57	55	53	53
4	72	62	55	70	61	55	59	54	49	47	45	45
5	66	56	49	64	55	49	53	48	43	41	39	39
6	61	51	44	60	50	43	49	43	38	36	34	34
7	57	46	39	56	46	39	44	38	34	32	30	30
8	53	42	36	52	42	35	41	35	31	29	27	27
9	50	39	32	49	38	32	38	32	28	26	24	24
10	47	36	30	46	36	29	35	29	25	23	21	21

Zonal Lumens Summary

Zone	Lumens	%Lamp	%Fixture
0-30	2319	27.1	32.4
0-40	3833	44.8	53.6
0-60	6164	72.1	86.2
0-90	7147	83.6	100.0
90-180	0	0	0
0-180	7147	83.6	100.0

2SP8 4 32 A12*

Report LTL7526

Lumens per lamp - 2850 - Lum. eff. - 81.5%

S/MH (along) 1.2 (across) 1.4

Coefficient of Utilization

Ceiling	80%				70%				50%			
	20%	50%	80%	100%	20%	50%	80%	100%	20%	50%	80%	100%
0	97	97	97	95	95	95	91	91	91	91	91	91
1	90	86	83	87	84	81	81	78	76	74	72	72
2	82	76	71	80	75	70	72	68	65	63	61	61
3	76	68	62	74	67	61	64	59	55	57	54	54
4	70	61	54	68	60	53	58	52	48	46	44	44
5	64	55	48	63	54	47	52	46	42	40	38	38
6	60	50	43	58	49	42	47	42	37	35	33	33
7	56	45	38	54	44	38	43	37	33	31	29	29
8	52	41	35	51	41	34	40	34	30	28	26	26
9	48	38	32	47	38	31	37	31	27	25	23	23
10	46	35	29	44	35	29	34	28	25	23	21	21

Zonal Lumens Summary

Zone	Lumens	%Lamp	%Fixture
0-30	3029	26.6	32.6
0-40	4999	43.8	53.8
0-60	8017	70.3	86.3
0-90	9292	81.5	100.0
90-180	0	0	0
0-180	9292	81.5	100.0

* With reverse apex lens



An Acuity Brands Company

SP8-2X4

SHEET NO. 00

ROOFTOP HEATING/COOLING UNIT SCHEDULE



EQ. NO.	AIRSIDE CAPACITY			DX COOLING (1)				GAS HEATING (2)				SUPPLY FAN/MOTOR				EL
	CFM	MIN OSA	ESP (IN.)	NOM. TONS	TOTAL (MBH)	SENS. (MBH)	EFFICIENCY	INPUT (MBH)	OUTPUT (MBH)	HTG. STAGES	EFFICIENCY AFUE	HP	FAN RPM	DRIVE	FAN TYPE	VOLT/PHASE
HVAC-1	1200	400	0.5	3	-	-	SEER 17.5	80	64	1	78%	-	-	DIRECT	-	460/3
.

NOTES:

- (1) HVAC-1 COOLING CONDITIONS: ARI STANDARD
- (2) HVAC-1 HEATING CONDITIONS: ARI STANDARD
- (3) WEIGHT NOT INCLUDING ROOF CURB, OR ECONOMIZER.

ELECTRICAL		FILTERS TYPE/THICKNESS	APPROX. OP. WEIGHT (LBS.)(3)	REMARKS	BASIS OF DESIGN MFR./MODEL
UNIT MCA	UNIT MOCP				
11.4	15	MERV 8 / 2"	606	ECONOMIZER PACKAGE WITH GRAVITY EXHAUST, ROOF CURB	TRANE / YHC037E4RM
.

REV By Addendum 1
DATE 7/23/2012

CORTNER ARCHITECTURAL COMPANY  1903 West 3rd Avenue Spokane, WA 99201 (509) 363-1039 phone	CLIENT INFORMATION  Spokane Transit Authority 1230 W. Boone Avenue, Spokane, Washington 99201	SHEET DESCRIPTION Revised Rooftop Heating / Cooling unit Schedule PROJECT NAME & ADDRESS Air Curtain Replacement and Resource/Clean Room 1229 West Boone Ave. Spokane, WA 99205	PROJ. NO. M+F-2011-190/191 SCALE DRAWN BY L&S CHECKED BY DWS DATE DRAWN 07/05/2012 SHEET MSI-01
--	--	--	--

This Page Intentionally Blank