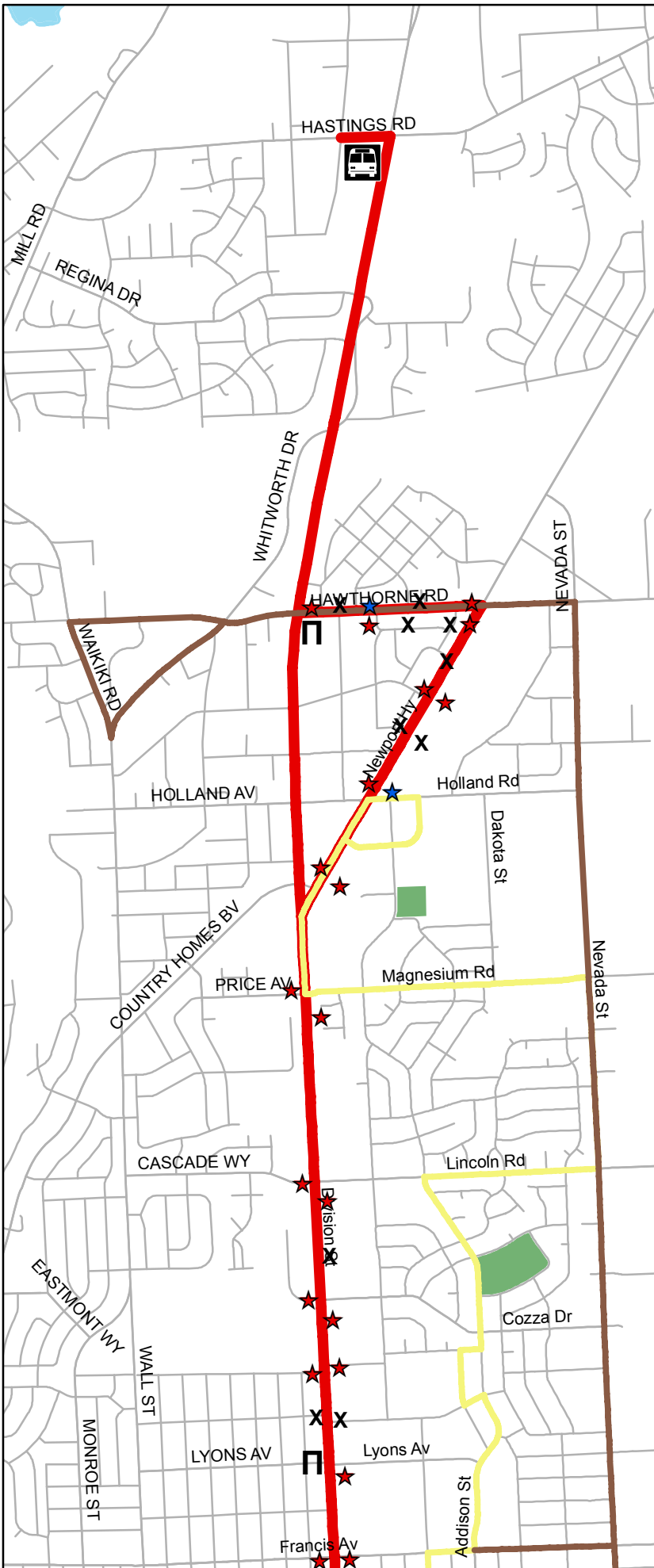
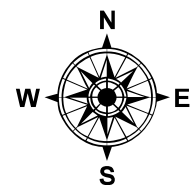


Route 25 Division Proposed Stop Plan Francis to Hastings



- ★ = New Stops
- ★ = Stops to Remain
- X = Stops to be Removed
- ⬠ = Existing Bus Shelter
- ⬠ = New Proposed Shelter

- RT 25 Division
- RT 26 Addison
- RT 28 Nevada



February 9, 2010