

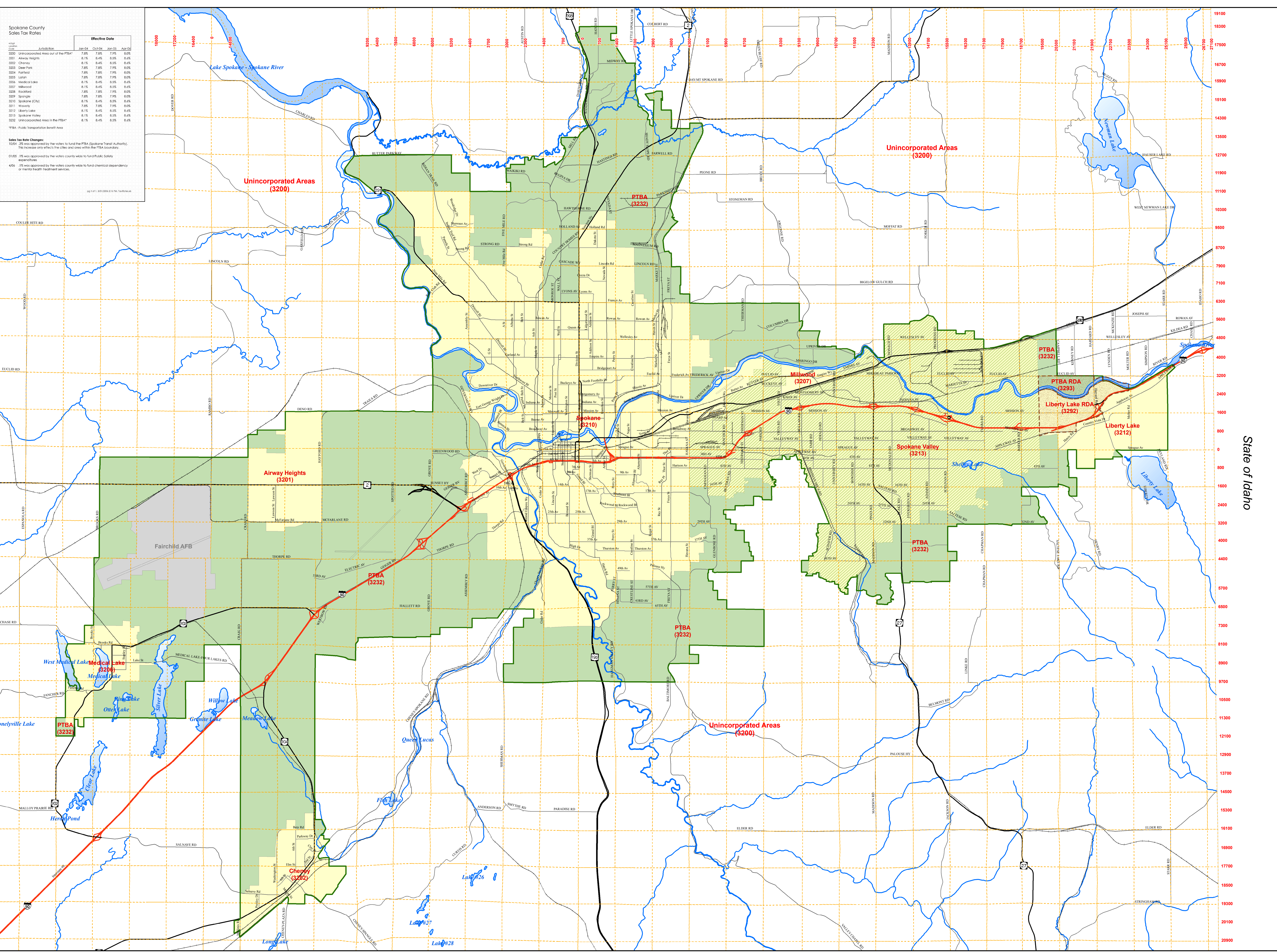
Spokane County Sales Tax Rates

Year	Effective Date	Jan 04	Oct 04	Jan 05	Apr 05
2000	Unincorporated Area out of the PTBA*	7.8%	7.8%	7.9%	8.0%
2001	Alleyway Village	8.1%	8.4%	8.5%	8.6%
2002	Cheney	8.1%	8.4%	8.5%	8.6%
2003	Deer Park	7.8%	7.8%	7.9%	8.0%
2004	Highland	7.8%	7.8%	7.9%	8.0%
2005	Latah	7.8%	7.8%	7.9%	8.0%
2006	Medical Lake	8.1%	8.4%	8.5%	8.6%
2007	Millwood	8.1%	8.4%	8.5%	8.6%
2008	Rockford	7.8%	7.8%	7.9%	8.0%
2009	Spokane	7.8%	7.8%	7.9%	8.0%
2010	Spokane (City)	8.1%	8.4%	8.5%	8.6%
2011	Wauvo	7.8%	7.8%	7.9%	8.0%
2012	Liberty Lake	8.1%	8.4%	8.5%	8.6%
2013	Spokane Valley	8.1%	8.4%	8.5%	8.6%
2012	Unincorporated Area in the PTBA*	8.1%	8.4%	8.5%	8.6%

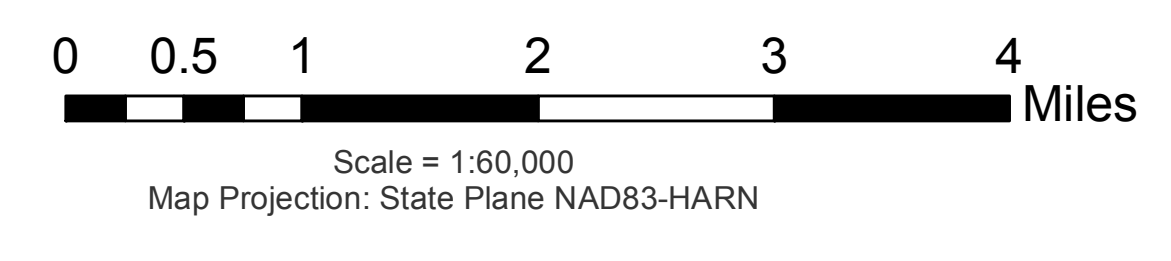
*PTBA - Public Transportation Benefit Area

Sales Tax Rate Changes:
 10/04 - 2% was approved by the voters to fund the PTBA (Spokane Transit Authority). The increase only affects the cities and area within the PTBA boundary.
 01/05 - 1% was approved by the voters county wide to fund Public Safety expenditures.
 4/05 - 1% was approved by the voters county wide to fund chemical dependency or mental health treatment services.

pg 1 of 1 1/31/2009 2:14 PM T:\Bartlett



NOTE - The information on this map is compiled from various sources and is subject to constant revision. Contact Margaret Smith at the Spokane County Office of Budget and Finance to obtain the most recent revision, (509) 477-5789.



Spokane County Retail Sales Tax Boundaries



Spokane County Geographic Information Systems
 Map Produced: March 2008

- Legend**
- PTBA Boundary
 - Revenue Development Area
 - City of Spokane Valley
 - Sections
 - Lakes & Streams
 - Incorporated inside PTBA
 - Unincorporated inside PTBA
 - Incorporated outside PTBA
 - Unincorporated outside PTBA
 - Fairchild Av Force Base