



DRAFT Fare Increase Proposal Spokane Transit Authority

Public Outreach – April –June 2016

STA's Fare Philosophy

Encourage increased ridership by providing convenient and reasonably priced method for citizens to enjoy the advantages of public transportation.

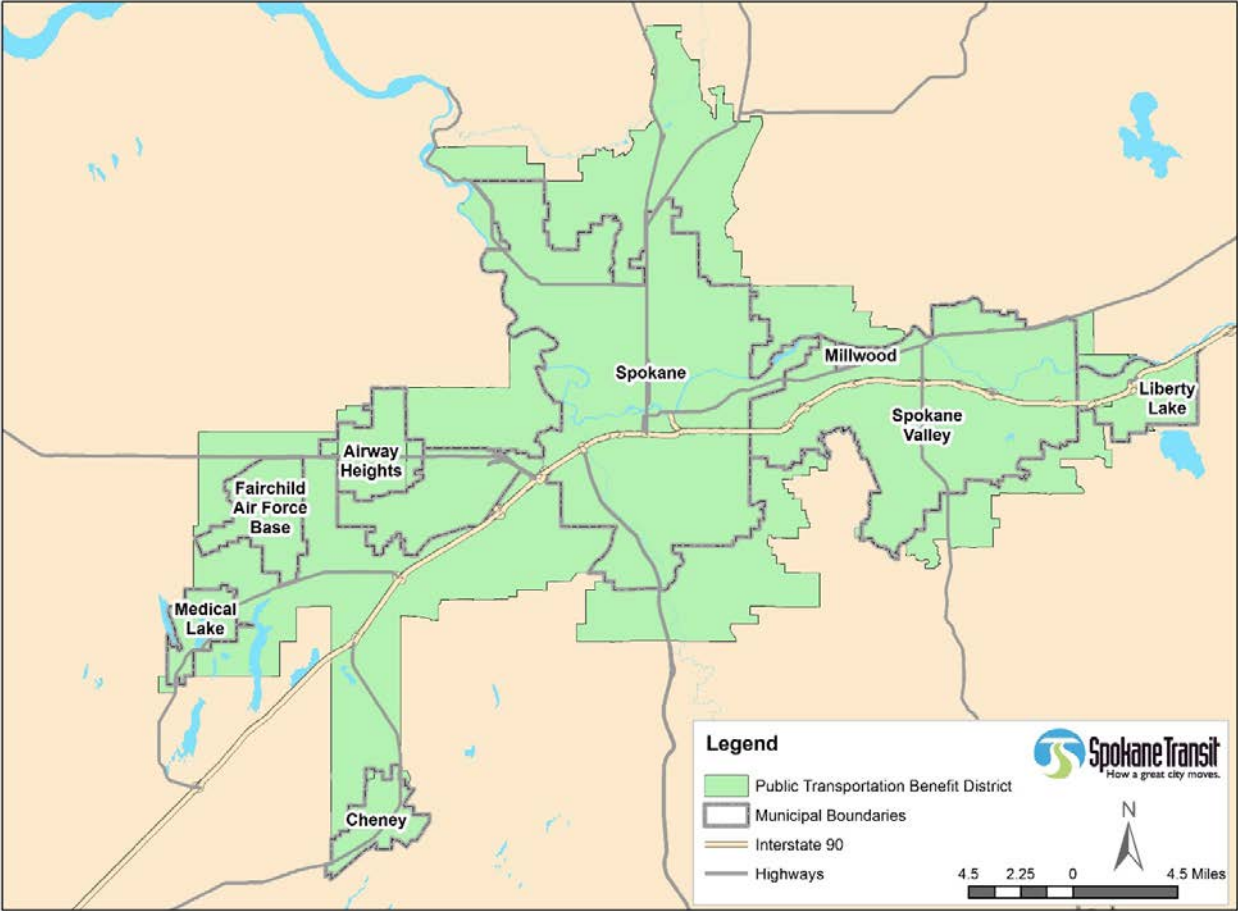
- Cost Effective
- Easy to Use
- Reduce Cash Use
- No Zone Differences
- Minimum 20% Fare Return



BACKGROUND

- STA has completed an evaluation of its fares and fare structure and is proposing changes to the amount and types of fares.
- Public Outreach will be conducted to seek public input on the proposal through May 2016, concluding with a Public Hearing at the June 16 STA Board of Directors meeting.
- The Board is scheduled to take action on this proposal at the July 21 Board of Directors meeting.
- STA's last fare increase occurred in phases between 2010 and 2012.
- If implemented in 2017, it will have been 5 years since an increase.

About STA - PTBA



Spokane County's Public Transportation Benefit Area (PTBA)
– Estimated population 413, 045

About STA - Governance

- STA Board of Directors – elected officials appointed by their respective jurisdictions and one non-voting labor representative
 - Chair – Al French, Spokane County Commissioner
 - Chair Pro Tempore – TBD, Spokane Valley Council Member
 - Member – Amber Waldref, Spokane Council Member
 - Member – Candace Mumm, Spokane Council Member
 - Member – TBD, Liberty Lake Council Member
 - Member – Ed Pace, Spokane Valley Council Member
 - Member – Shelley O’Quinn, Spokane County Commissioner
 - Member – Aspen Monteleone, Airway Heights Council Member
 - Member – Tom Trulove, Cheney Mayor
 - Non-Voting Labor Representative – Rhonda Bowers
 - Ex-Officio Member – Kevin Freeman, Millwood Mayor
 - Ex-Officio Member – John Higgins, Medical Lake Mayor

About STA - Service

■ Regular Fixed-Route Bus

- 34 Routes throughout the region
- 134 coaches (combination of 60', 40', 35', and 29' buses)
- Approximately 112 coaches in service during 'peak' hours
- 10.8 million rides in 2015

■ Paratransit Vans

- 110 Vans
- Nearly 465,000 rides in 2015
- Surplus Van Grant program

■ Vanpool

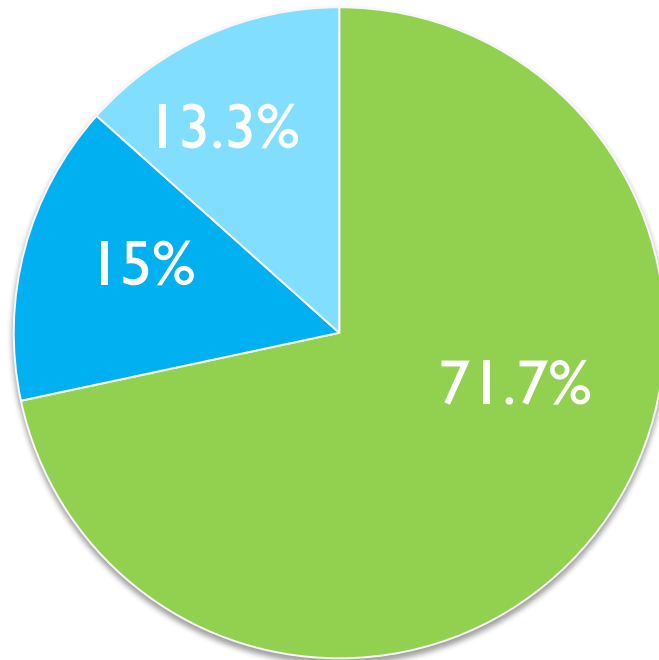
- Approximately 90-95 vans
- Estimated 1,000 participants
- Approximately 250,000 trips per year



About STA - Revenue

- STA Revenue is from three sources

2015 Revenue

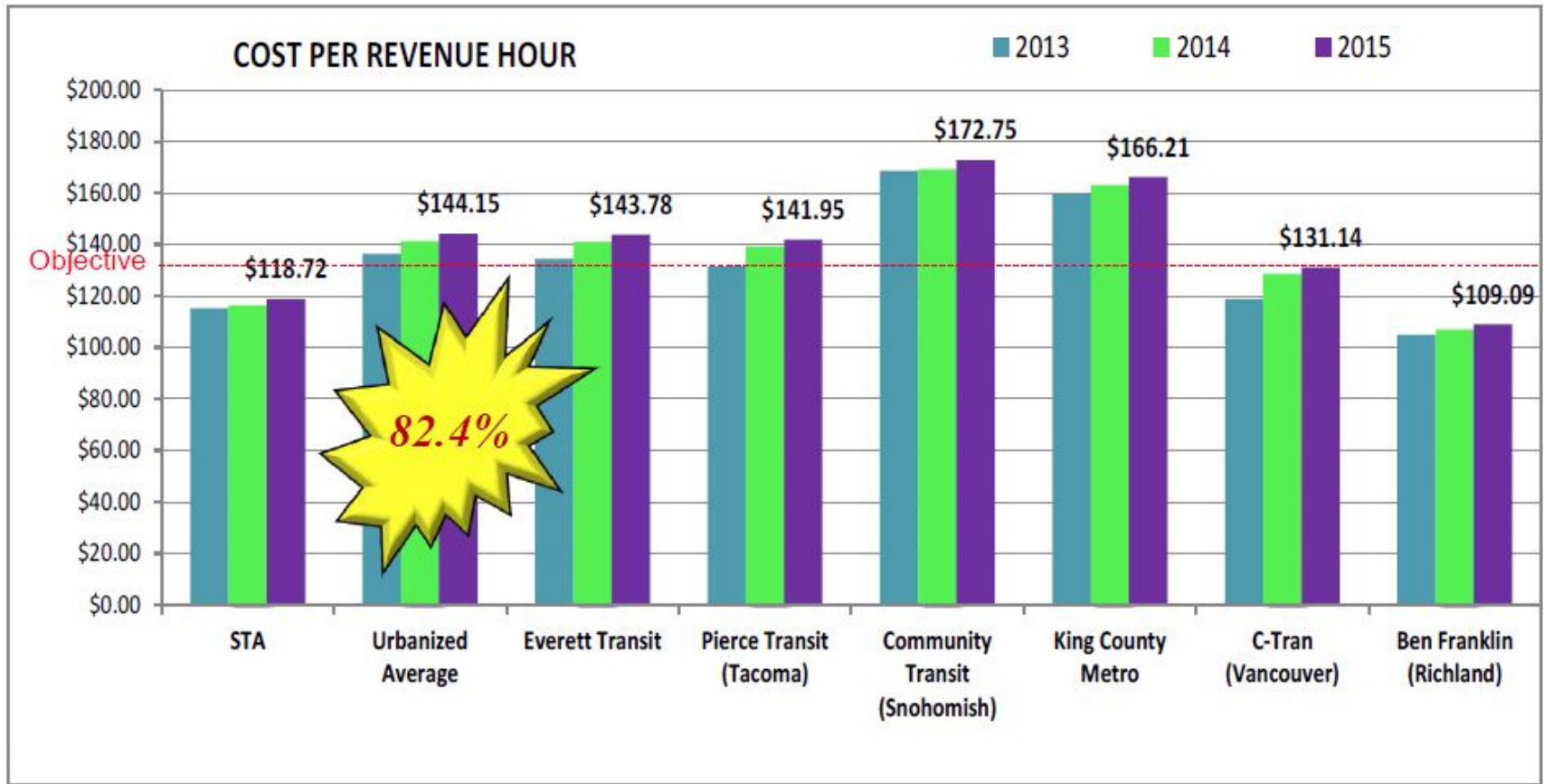


Revenue Types

- Local Sales Tax
- Passenger Fares
- Grants & Other

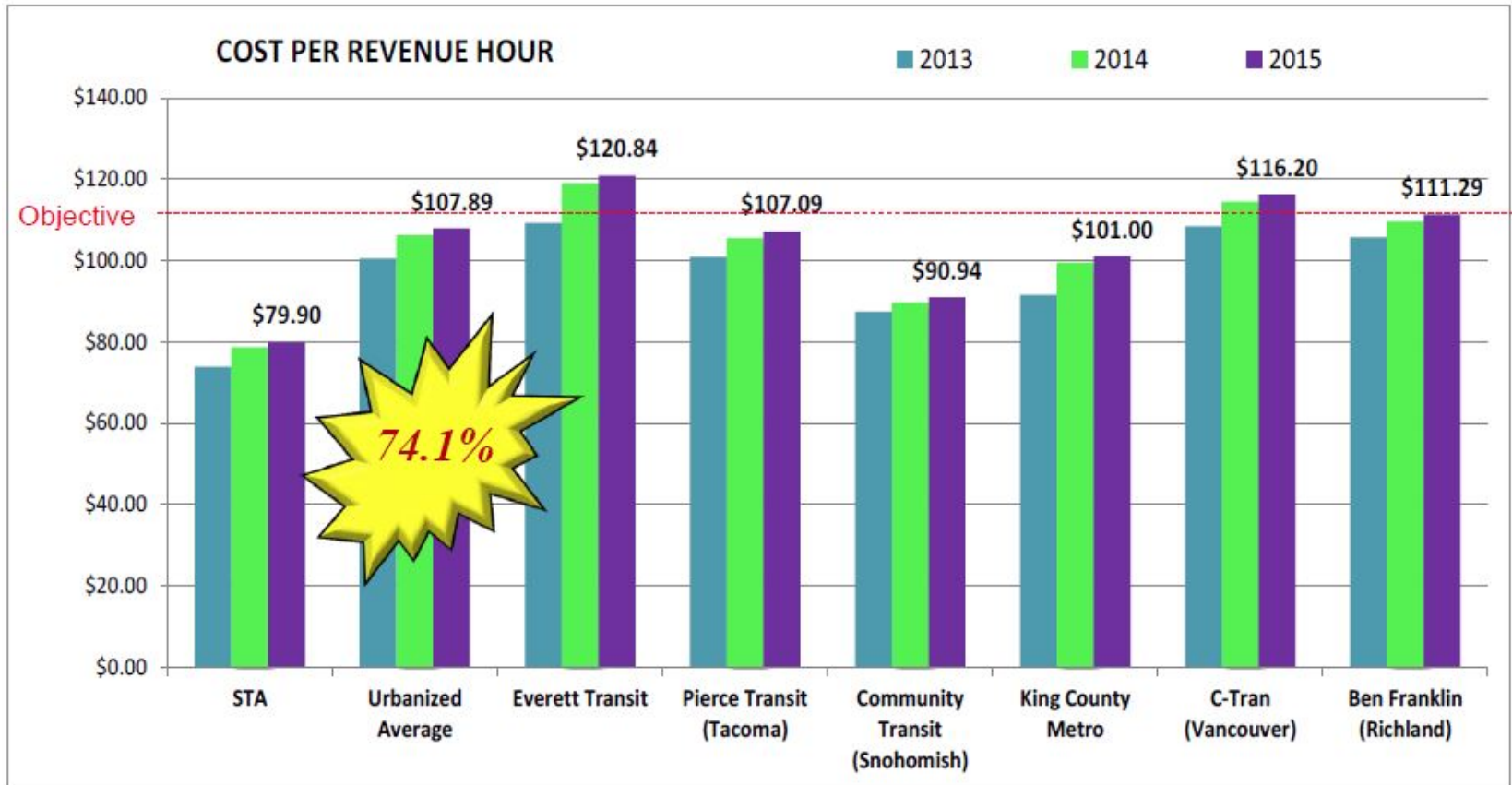
About STA – Operating Cost Comparisons

- STA Fixed Route operating costs per hour are 17.6% lower than urban average



About STA – Operating Cost Comparisons

- STA Paratransit operating costs per hour are 25.9% lower than the urban average



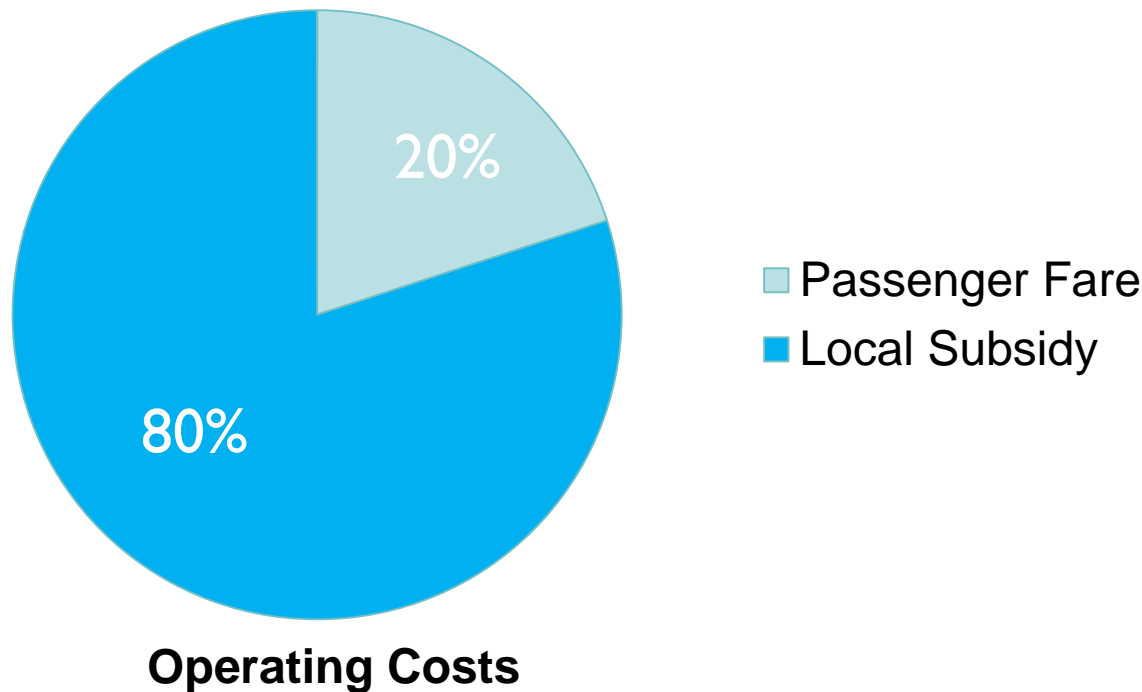
Preliminary Fare Increase Proposal

- What is the right amount for passenger fares?

STA Fare Policy

- STA Fare Policy – A fixed route passenger fare return objective of 20% (minimum) of the operating costs of the service is maintained.

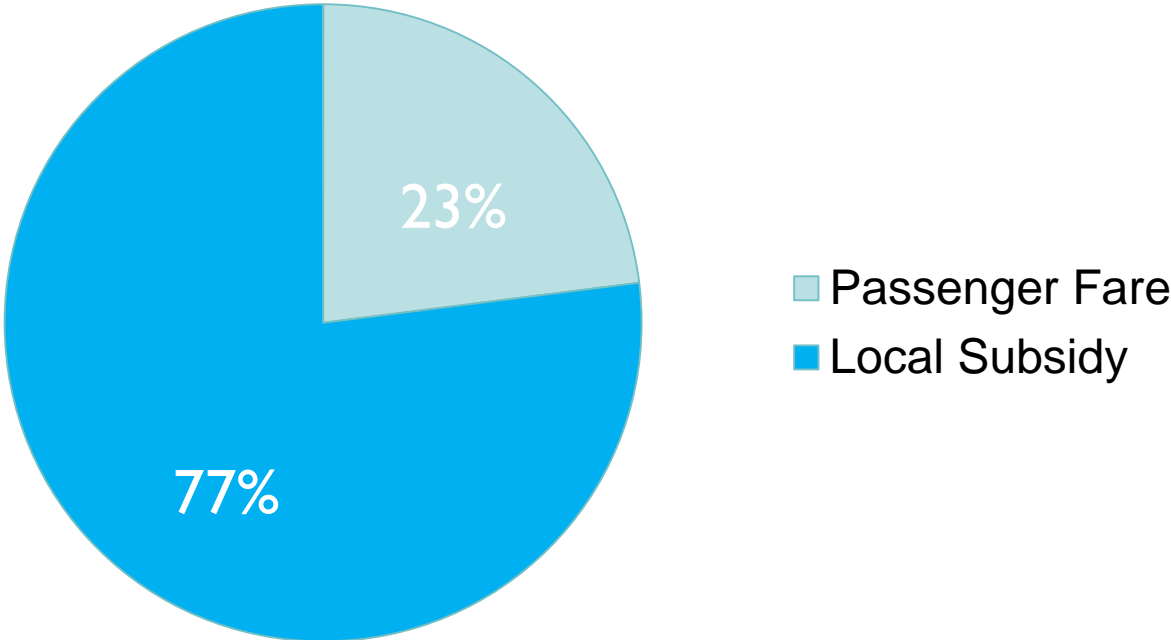
STA Fare Recovery Objective



National Fare Average

- National Fare Average – Passenger fares account for approximately 23% of operating costs (ABBG and NTD information)

National Fare Recovery Average

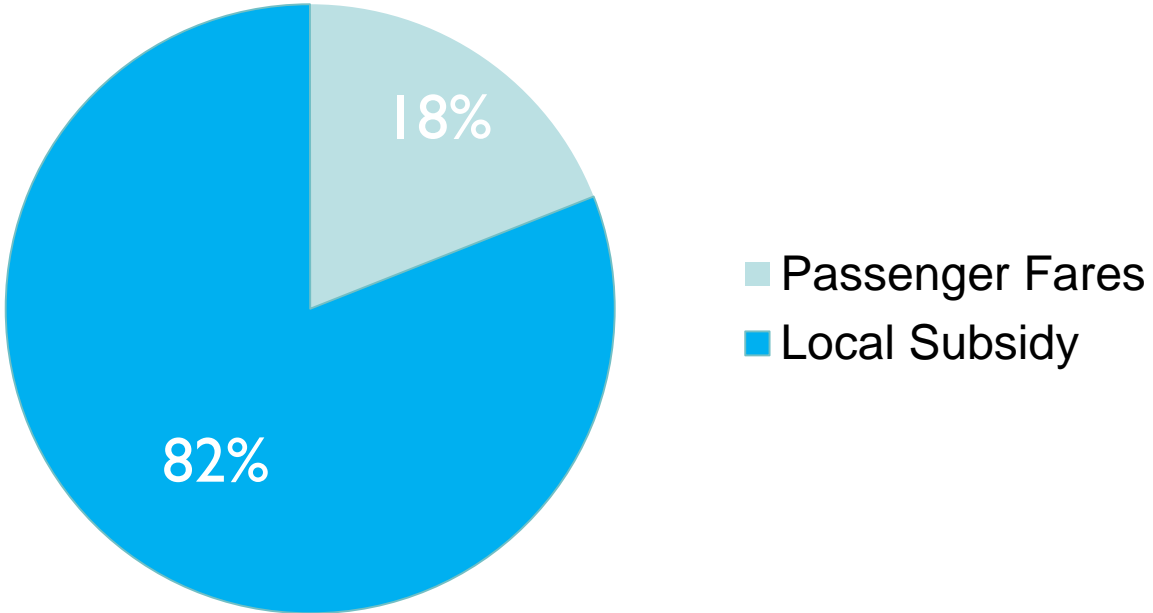


Operating Costs

STA Fare Policy

- Current Passenger Fare below policy – In recent years, revenue from local passenger fares has dropped below the minimum 20% recovery rate to 18%.

Current STA Fare Recovery

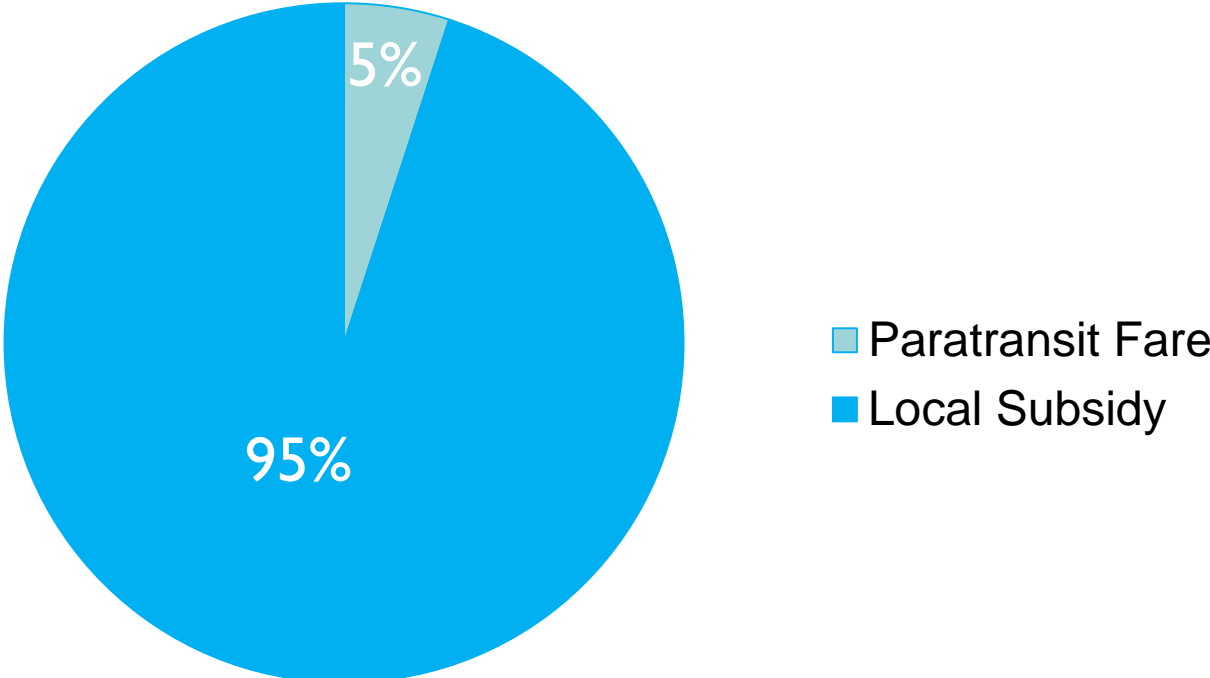


Operating Costs

STA Fare Policy

- Current Paratransit Fare – Paratransit service is essential for those whose disabilities prevent them from using the regular fixed route system. Paratransit passenger fare recovery objective is 5%.

Paratransit Passenger Fare Recovery

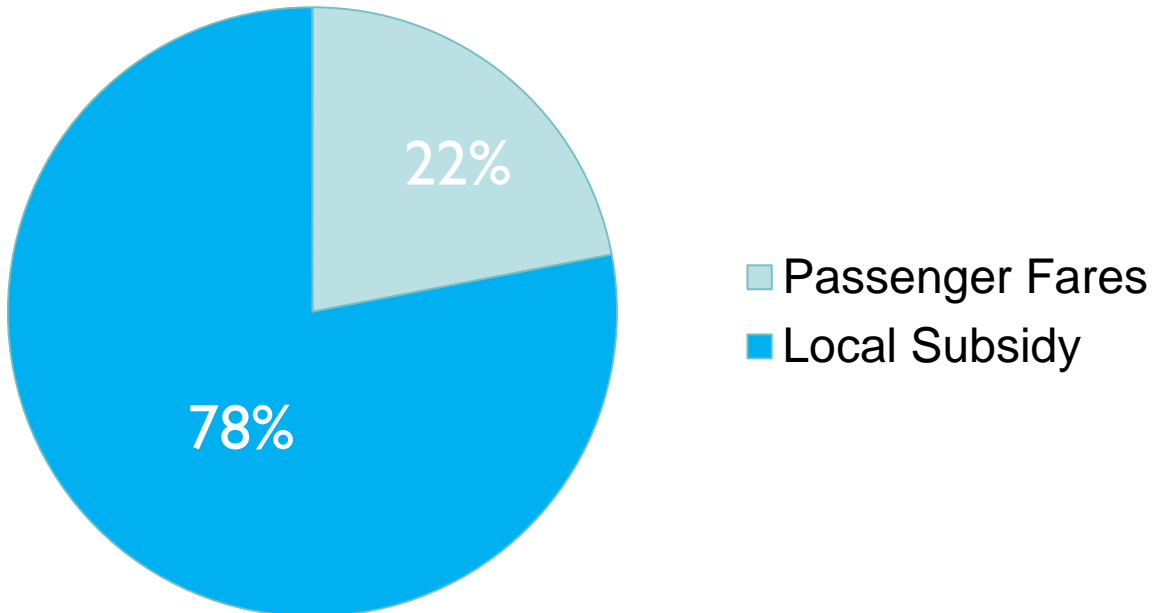


Operating Costs

STA Fare Policy

- Preliminary Fare Proposal – If increased, passenger fares would increase STA’s estimated recovery rate to approximately 22% in the first year.

Proposed Passenger Fare Recovery



Operating Costs

Fare Increase Proposal

- How would STA's increase compare to other transit agency fares?

STA Comparisons

Transit Agency	Location	Trip	Pass
Spokane Transit	Spokane, WA	\$2.00*	\$60
Community Transit	Snohomish, WA	\$2.25	\$81
Pierce Transit	Tacoma, WA	\$2.00	\$72
C-Tran	Vancouver, WA	\$2.50	\$100
Kitsap Transit	Kitsap, WA	\$2.00	\$50
Metro Transit	Madison, WI	\$2.00	\$58
RTC	Reno, NV	\$2.00	\$65
Mountain Metro Transit	Colorado Springs, CO	\$1.75	\$63
Utah Transit Authority	Salt Lake City, UT	\$2.50	\$83.75

* Preliminary Proposal

STA and National Comparisons

Context – ABBG Base Fares:

Variation Linked to Overall Policy (Transfers/Day Passes)

Current Base Fares (as of September 2015)



Preliminary Fare Increase Proposal

- What are the specific changes being proposed?

DRAFT Fare Increase Proposal

Fare Category	Current Fare as of 2012	Preliminary Proposal 7/1/2017	New Draft Recommendation	
			7/1/2017	7/1/2018
Adult				
Cash Fare	\$1.50	\$2.00	\$1.75	\$2.00
2-Hour Pass	\$1.50	\$2.00	\$1.75	\$2.00
Day Pass	\$3.50	\$4.00	\$4.00	\$4.00
31-Day Rolling Pass	\$45.00	\$60.00	\$50.00	\$60.00
City Ticket (Shuttle Service)				
	\$30.00	\$40.00	\$35.00	\$40.00
7-Day Rolling (New)		\$17.00	\$15.00	\$17.00
4-Day Rolling (New)		\$12.00	N/A	N/A
Reduced Fare				
Cash Fare	\$0.75	\$1.00	\$0.75	\$1.00
2-Hour Pass	\$0.75	\$1.00	\$0.75	\$1.00
31-Day Rolling Pass	\$22.50	\$30.00	\$25.00	\$30.00
Student Pass				
	\$37.00	Discontinue	\$42.00	\$52.00
Youth				
Cash Fare	\$1.50	\$2.00	\$1.75	\$2.00
Day Pass	\$3.50	\$4.00	\$4.00	\$4.00
31-Day Rolling Pass	\$30.00	\$40.00	\$35.00	\$40.00
Youth Summer	\$45.00	Discontinue	Discontinue	Discontinue
Paratransit				
Cash Fare	\$1.50	\$2.00	\$1.75	\$2.00
PT One Ride	\$1.50	\$2.00	\$1.75	\$2.00
Monthly Pass	\$45.00	\$60.00	\$50.00	\$60.00

- Question to consider:
 - Is it good for STA's Fare Policy to be similar to the national average?
 - Is the proposed increase reasonable?
 - Is a full year enough time for customers to prepare for the change?
 - How will the change affect you?
 - Is STA's Smart Card or new 7-day/4-day pass a way to help budget for travel?
 - Do you have another idea STA should consider?

2016 Public Outreach – Next Steps

- Public Outreach Continues through May 2016
- Public Hearing at June 16, 2016 Board Meeting
- Decision to be made at July 21, 2016 Board Meeting
- If approved, increase could be implemented July 1, 2017

Thank You

- **Questions or Feedback?**

- Visit www.spokanetransit.com for more information