

# SPOKANE TRANSIT AUTHORITY

## STA PLAZA FIRST FLOOR ROTUNDA - TENANT IMPROVEMENT

Project Number: 2025-11057

### Property/Project Information:

PARCEL NUMBER: 35183.0508  
 ADDRESS: 701 W. RIVERSIDE AVE. SPOKANE, WA 99201  
 ZONING: DTC  
 BUILDING AREA: 90,342 SF  
 BUILDING USE: TRANSIT - OTHER  
 CONSTRUCTION TYPE: INTERIOR REMODEL OF FINISHES AND LIGHTING IN THE FIRST FLOOR ROTUNDA SPACE.

### Contact Information:

**OWNER:**  
 SPOKANE TRANSIT AUTHORITY  
 1230 WEST BOONE AVENUE  
 SPOKANE, WA 99201  
 (509) 325-6049  
 CONTACT - JESSICA KELCH  
 (JKELCH@SPOKANETRANSIT.COM)

**STRUCTURAL ENGINEER (PRIMARY CONTACT):**  
 COFFMAN ENGINEERS, INC.  
 221 NORTH WALL STREET, SUITE 500  
 SPOKANE, WA 99201  
 (509) 328-2994  
 CONTACT - SHELBY MCGOWAN  
 (SHELBY.MCGOWAN@COFFMAN.COM)

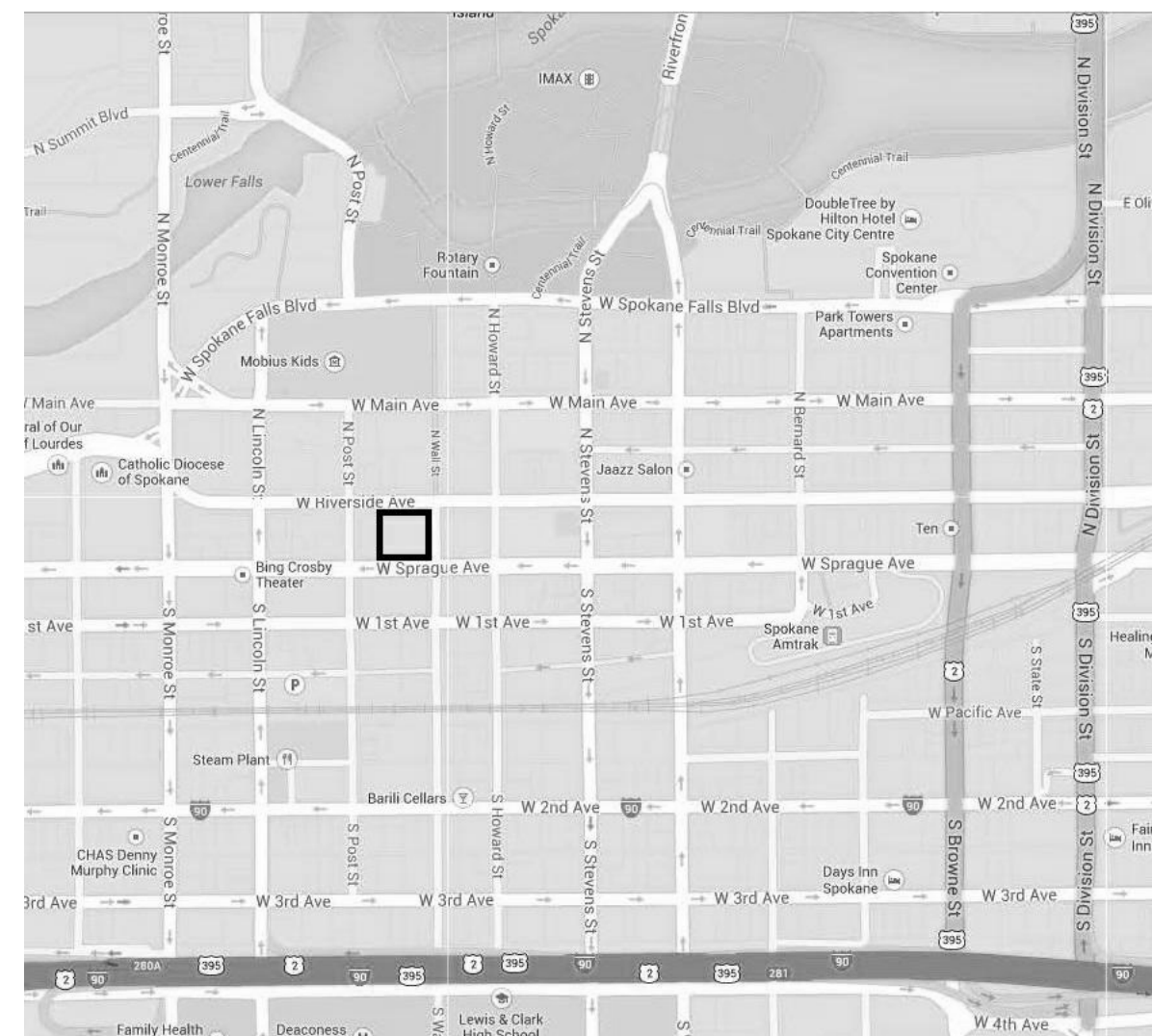
**ELECTRICAL ENGINEER (PRIMARY CONTACT):**  
 COFFMAN ENGINEERS, INC.  
 221 NORTH WALL STREET, SUITE 500  
 SPOKANE, WA 99201  
 (509) 328-2994  
 CONTACT - MATTHEW VERHEUL  
 (MATTHEW.VERHEUL@COFFMAN.COM)

**ARCHITECT (PRIMARY CONTACT):**  
 ALSO ARCHITECTS  
 23 N WASHINGTON ST, SUITE 400  
 SPOKANE, WA 99201  
 (509) 838-8665  
 CONTACT - GALE STANLEY  
 (GSTANLEY@ALSOARCHITECTS.COM)

### Sheet Index:

SHEET INDEX	
SHT NO	SHEET TITLE
G-001	COVER SHEET
A-100	SYMBOLS & ABBREVIATIONS
A-101	DEMOLITION PLAN, FLOOR PLAN, REFLECTED CEILING PLAN
A-102	FURNITURE PLAN, ELEVATIONS, SCHEDULES
A-201	DETAILS
E-001	SYMBOLS AND NOTES
E-002	SHEET SPECS
E-101	OVERALL ELECTRICAL PLAN
E-401	ENLARGED ELECTRICAL PLANS
E-701	ELECTRICAL SCHEDULES AND DETAILS

### Vicinity Map:



VICINITY MAP  
6" = 1'-0"

### General Notes:

**COFFMAN ENGINEERS**  
 221 N. Wall Street,  
 Suite 500  
 Spokane, WA 99201  
 ph 509.328.2994  
 www.coffman.com

**ALSO ARCHITECTS**  
 203 North Washington, Suite 400  
 Spokane, WA 99201  
 509.838.8665  
 6500 Mineral Drive, Suite 101  
 Coeur d'Alene, Idaho 83815  
 208.676.6292  
 alsoarchitects.com



STA PLAZA 1ST FLOOR ROTUNDA  
TENANT IMPROVEMENT

Spokane Transit Authority  
1230 W. Boone Avenue,  
Spokane, Washington 99201

REV	DATE	DESCRIPTION

PROJ. NO. 2025-11057  
 DRAWN JDB  
 CHECKED SMM  
 DATE 03-28-2025

© COFFMAN ENGINEERS  
 SHEET TITLE:  
 COVER SHEET

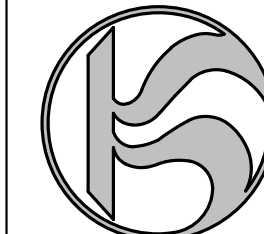
SHEET NO:  
**G-001**  
 SHEET OF

**BID SET**









REV	DATE	DESCRIPTION

PROJ. NO.	2024-047
DRAWN	ER/KB
CHECKED	GS
DATE	03-28-2025

© COFFMAN ENGINEERS

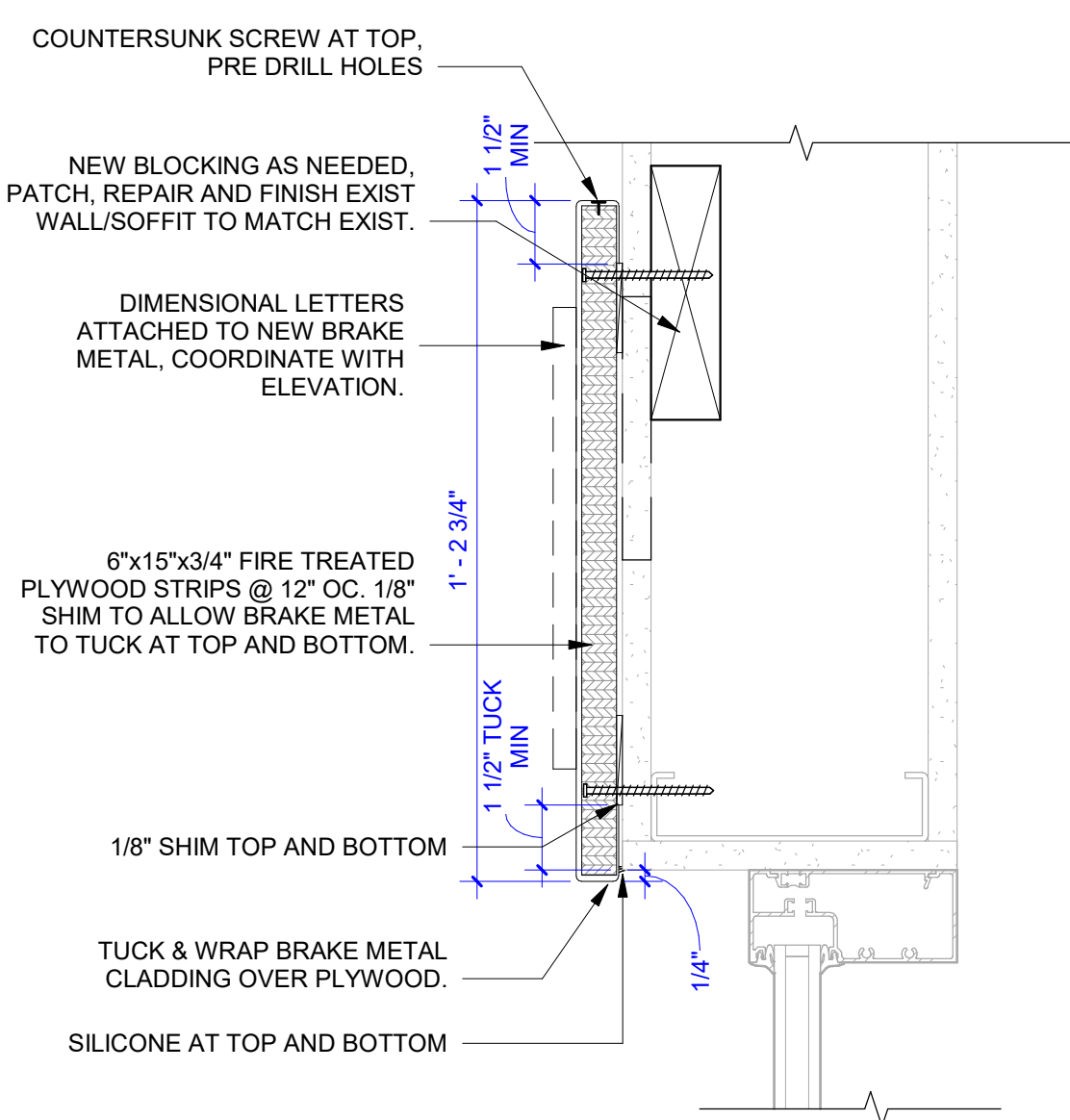
SHEET TITLE:

DETAILS

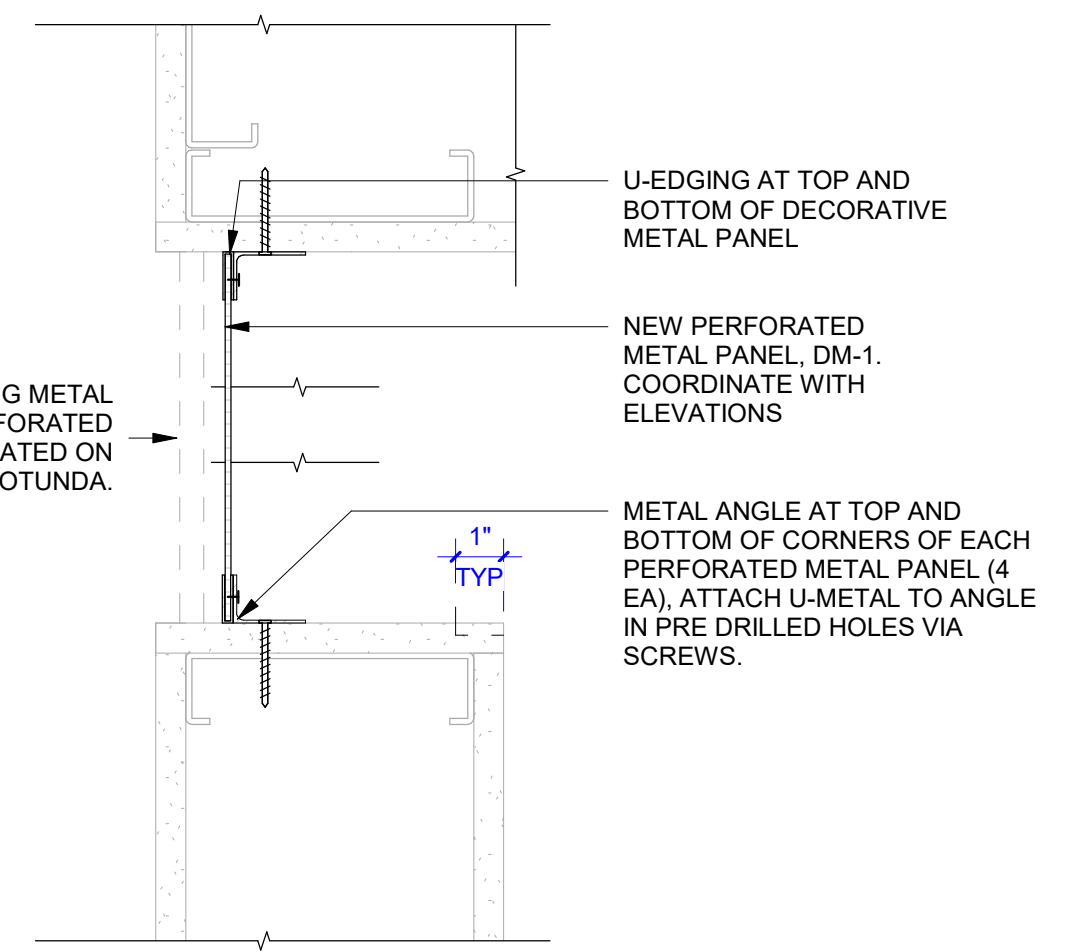
SHEET NO:

**A-201**

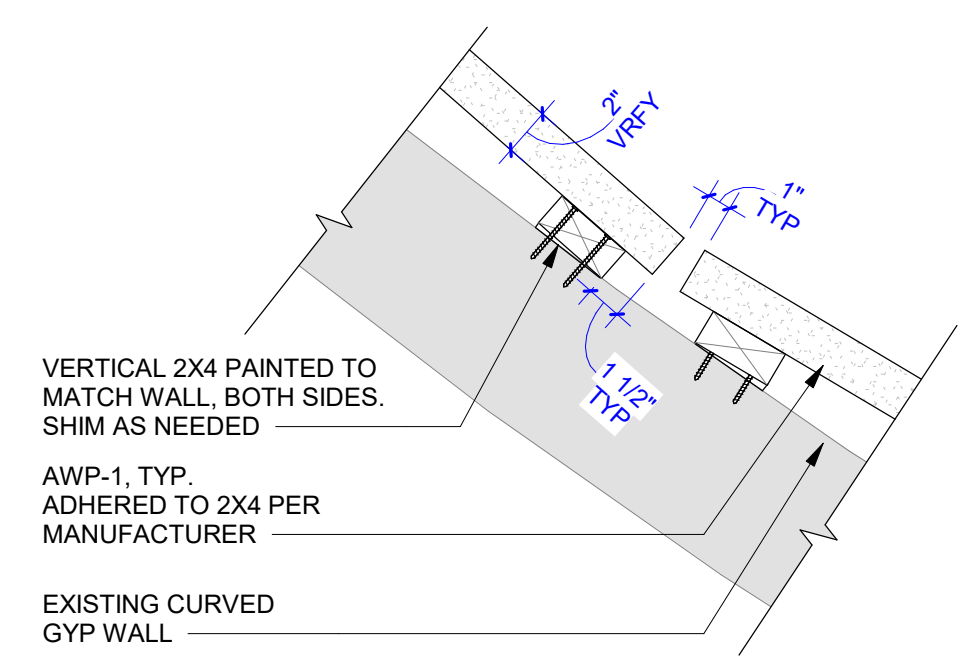
SHEET OF



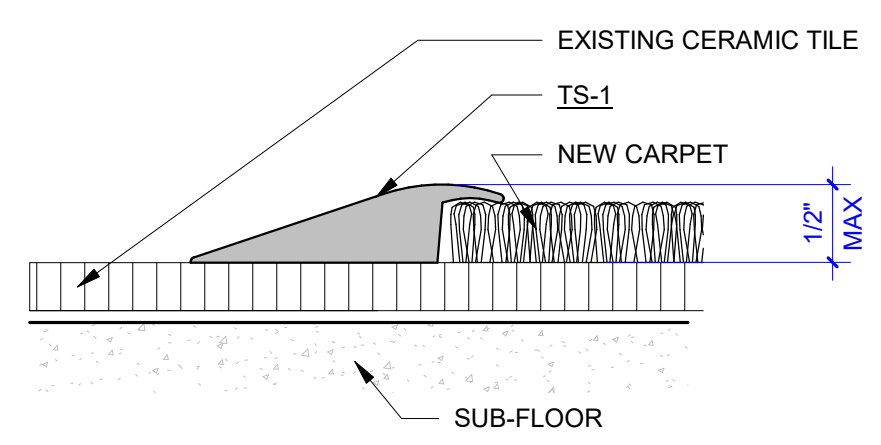
**B1 METAL BAND**  
SCALE: 3" = 1'-0"



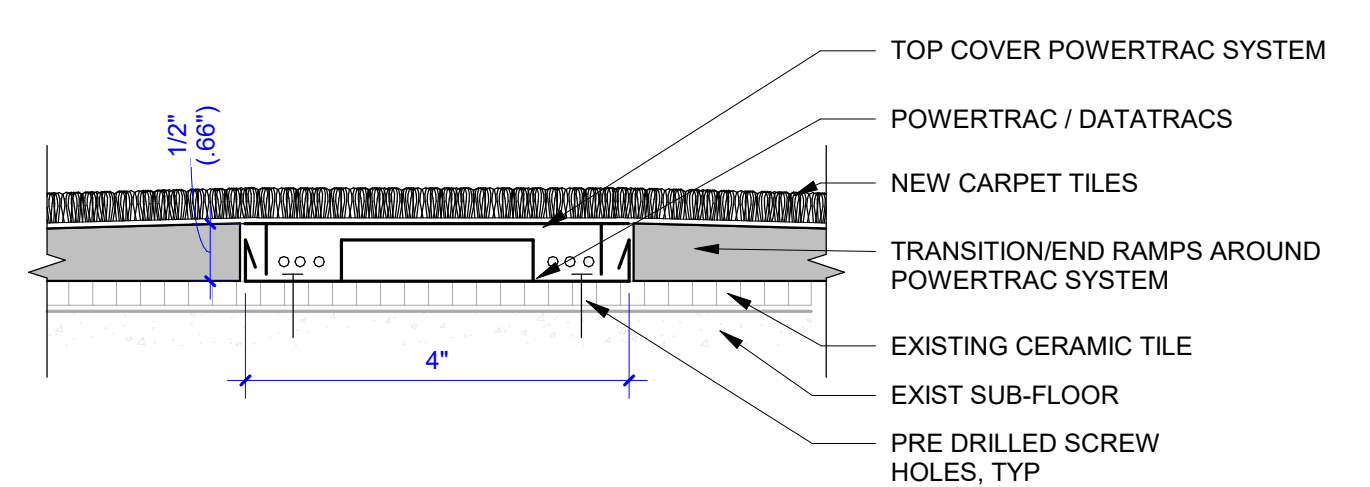
**B2 PERFORATED METAL PANEL**  
SCALE: 3" = 1'-0"



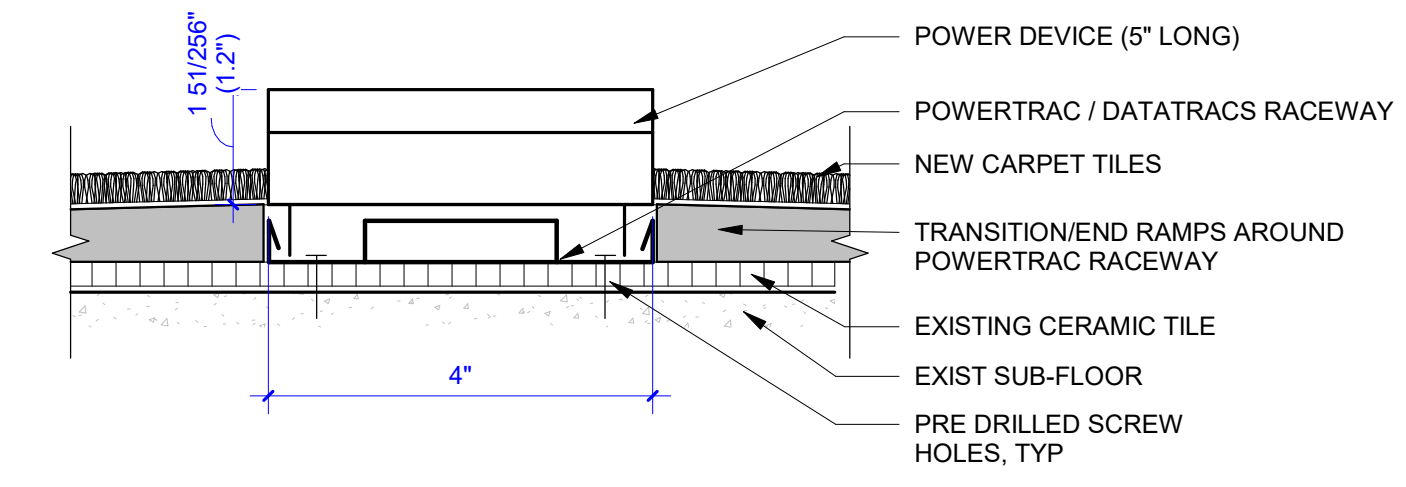
**B3 AWP-1 ATTACHMENT**  
SCALE: 1 1/2" = 1'-0"



**A1 TS-1 EXIST CERAMIC TILE TO CARPET**  
SCALE: 12" = 1'-0"



**A2 UNDERCARPET FLEX RACEWAY SYSTEM @ TRACK**  
SCALE: 6" = 1'-0"



**A4 UNDERCARPET FLEX RACEWAY SYSTEM @ POWER DEVICE**  
SCALE: 6" = 1'-0"

**BID SET**

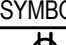
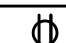

1 2 3 4 5


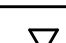
D

C

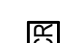


B

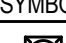
A



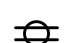






RECEPTACLE SCHEDULE		
SYMBOL	DESCRIPTION	NOTES
	QUAD RECEPTACLE - WALL MOUNTED	TAMPER RESISTANT IN AREAS NOTED.
	DUPLEX RECEPTACLE - WALL MOUNTED	TAMPER RESISTANT IN AREAS NOTED.
	SPECIAL RECEPTACLE - NEMA TYPE AS NOTED	

TELECOMMUNICATIONS OUTLET SCHEDULE		
SYMBOL	DESCRIPTION	NOTES
	COAX CABLE OUTLET	
	DATA OUTLET, TOTAL OF 4-PORTS.	SUBSCRIPT DENOTES NUMBER OF ACTIVE PORTS.

FLOOR BOXES SCHEDULE		
SYMBOL	DESCRIPTION	NOTES
[FB1]	(2) DUPLEX RECEPT	PROVIDE SLIM PROFILE CAST IN CONCRETE FLOOR BOX, COORDINATE WITH ARCH FLOOR DEMO.
[FB2]	(1) DUPLEX RECEPT, (1) T2 DATA	PROVIDE SLIM PROFILE CAST IN CONCRETE FLOOR BOX, COORDINATE WITH ARCH FLOOR DEMO.

SECURITY AND DOOR ACCESS SCHEDULE		
SYMBOL	DESCRIPTION	NOTES
	PROXIMITY CARD READER	PROVIDE ROUGH-IN AT +44" AFF. COORDINATE WITH ARCHITECTURAL DOOR HARDWARE PRIOR TO ROUGH-IN.
	ACCESS CONTROL ELECTRIC STRIKE	COORDINATE WITH ARCHITECTURAL DOOR HARDWARE PRIOR TO ROUGH-IN.
	DOOR POSITION INDICATOR SWITCH (DPS)	COORDINATE WITH ARCHITECTURAL DOOR HARDWARE PRIOR TO ROUGH-IN.

FIRE ALARM SCHEDULE		
SYMBOL	DESCRIPTION	NOTE
	STROBE WALL MOUNTED	

SYMBOLS LEGEND	
SYMBOL	DESCRIPTION
	DUPLEX RECEPTACLE, 125V, 20A
	DOUBLE-DUPLEX RECEPT, 125V, 20A
	CEILING-MTD DUPLEX RECEPTACLE, 125V, 20A
	CEILING-MTD DOUBLE-DUPLEX RECEPTACLE, 125V, 20A
	EQUIPMENT CONNECTION
	FLUSH MOUNTED PANELBOARD
	SURFACE MOUNTED PANELBOARD
	480V PANELBOARD
	208V OR 240V PANELBOARD

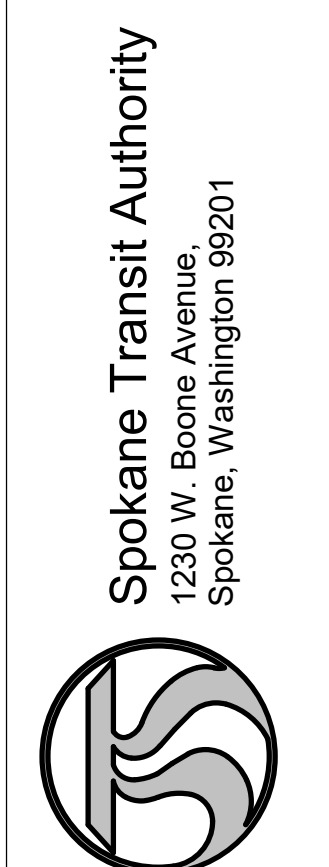
- | GENERAL NOTES |   |
|---------------|---|
| 1.            | MOUNTING HEIGHTS OF DUPLEX RECEPTACLES AND OTHER OUTLETS SHALL BE 16" TO BOTTOM OF BOX, UNLESS OTHERWISE NOTED. |
| 2.            | CATALOG NUMBERS USED SHALL BE AS NOTED OR APPROVED EQUALS.  |
| 3.            | CONTRACTOR SHALL COORDINATE WORK WITH OTHER TRADES.   |
| 4.            | CONTRACTOR SHALL PROVIDE ALL WORK AND MATERIAL FOR COMPLETE WIRING SYSTEMS AS SHOWN OR SPECIFIED.               |
| 5.            | INSTALLATION SHALL COMPLY WITH NEC 2020 AND LOCAL CODES.  |
| 6.            | CONTRACTOR TO REFER TO MANUFACTURERS DOCUMENTS FOR ADDITIONAL DATA PRIOR TO STARTING ROUGH-IN.                  |
| 7.            | CONTRACTOR TO PROVIDE ALL RECEPTACLES, CORDS, CORD CAPS, SWITCHES AND WIRING UNLESS OTHERWISE NOTED.            |



221 N. Wall Street,  
Suite 500  
Spokane, WA 99201  
ph 509.328.2994  
www.coffman.com



STA PLAZA 1ST FLOOR ROTUNDA  
TENANT IMPROVEMENT



REV	DATE	DESCRIPTION

PROJ. NO. 2025-11057  
DRAWN SLP  
CHECKED MBV  
DATE 03-28-2025

© COFFMAN ENGINEERS

SHEET TITLE:  
SYMBOLS AND NOTES

SHEET NO:  
E-001

SHEET OF

BID SET

1 2 3 4 5



- GENERAL NOTES:
- ALL WORK SHALL COMPLY WITH THE CURRENT EDITION OF THE NEC AS ADOPTED BY THE STATE OF WASHINGTON OR THE LOCAL AUTHORITY HAVING JURISDICTION.
  - PROVIDE FIRE SEALANT FOR ALL PENETRATIONS THROUGH RATED WALLS.
  - VERIFY CABLING WITH DOOR HARDWARE SPECIFICATIONS AND SECURITY CONTRACTOR PRIOR TO ROUGH-IN.
  - ELECTRICAL CONTRACTOR TO PROVIDE ROUGH-IN INCLUDING BACK BOXES, RACEWAY, CABLE, AND TERMINATIONS FOR ACCESS CONTROL.
  - UTILIZE PLENUM RATED CAT 6 CABLE, AND 3/4" CONDUIT TO ACCESSIBLE CEILING.
  - REFER TO DRAWING E-701 FOR LUMINAIRE SCHEDULE AND PANEL SCHEDULES.
  - SURFACE MOUNTED CONDUIT SHALL BE PERMITTED ONLY WITHIN THE ROTUNDA SECURITY OFFICE AND ANY USE SHALL BE APPROVED BY OWNER PRIOR TO ROUGH-IN.
  - PROVIDE 3/4"C, 2#10, 1#10G FOR BRANCH CIRCUITS UNLESS NOTED OTHERWISE.

- KEYNOTES (10X)
- EXISTING ACCESS CONTROL HEAD-END EQUIPMENT. NEW ROTUNDA DOOR DEVICES TO BE ADDED TO AVAILABLE PORTS OR PROVIDE NEW MODULE CONTROLLER AS REQUIRED. CONFIRM REQUIREMENTS WITH SECURITY CONTRACTOR. WORK IN THIS TENANT AREA IS ONLY ALLOWED BETWEEN THE HOURS OF 6AM TO 11AM AND MUST BE COORDINATED. CONTRACTOR TO COORDINATE ACCESS THROUGH STA NO LESS THAN 72 HOURS IN ADVANCE. NO IMPACT TO TENANT OPERATIONS IS PERMITTED.
  - ROUTE CONDUIT TO PANEL 1LA VIA ACCESSIBLE CEILING SPACE.
  - ROUTE CONDUIT AND CABLES THROUGH ACCESSIBLE CEILING FROM CONTROLLER TO NEW DOORS. REFER TO CONNECTION DETAIL 1/E-701 FOR CABLING REQUIREMENTS.
  - ROUTE PLENUM RATED CAT6 CABLES THROUGH ACCESSIBLE CEILING SPACE FROM DATA DROPS IN ROTUNDA TO SERVER RACK.

**COFFMAN ENGINEERS**  
 221 N. Wall Street,  
 Suite 500  
 Spokane, WA 99201  
 ph 509.328.2994  
 www.coffman.com

**ALSC ARCHITECTS**  
 203 North Washington, Suite 400  
 Spokane, WA 99201  
 509.838.8568  
 6500 Mineral Drive, Suite 101  
 Coeur d'Alene, Idaho 83815  
 208.676.5292  
 alssearchitects.com



**STA PLAZA 1ST FLOOR ROTUNDA  
 TENANT IMPROVEMENT**

Spokane Transit Authority  
 1230 W. Boone Avenue  
 Spokane, Washington 99201

REV	DATE	DESCRIPTION

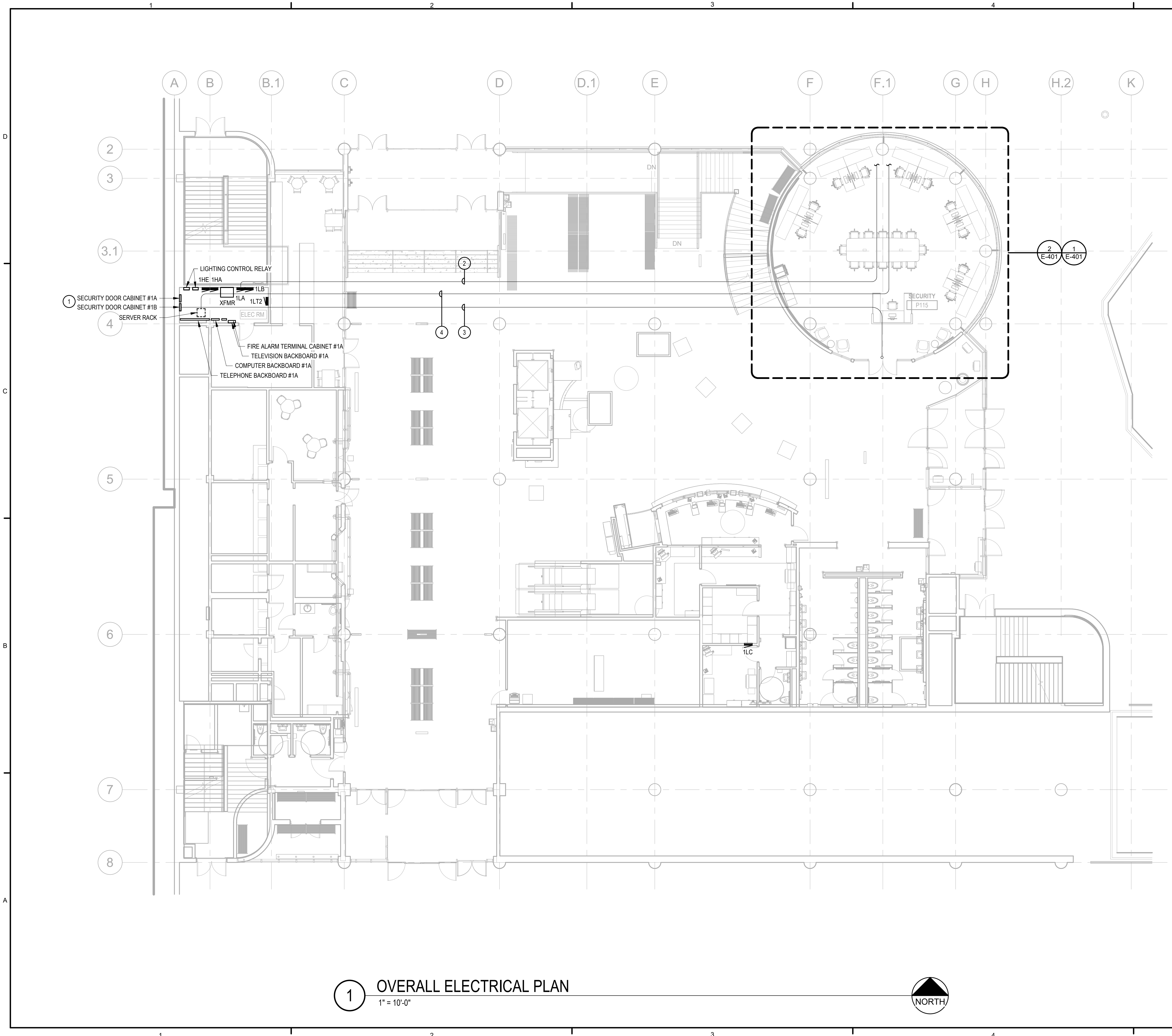
PROJ. NO. 2025-11057  
 DRAWN SLP  
 CHECKED MBV  
 DATE 03-28-2025

© COFFMAN ENGINEERS

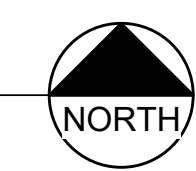
SHEET TITLE:  
**OVERALL ELECTRICAL PLAN**

SHEET NO:  
**E-101**

SHEET OF



**1 OVERALL ELECTRICAL PLAN**  
 1" = 10'-0"



**BID SET**

3/25/2025 1:24:12 PM

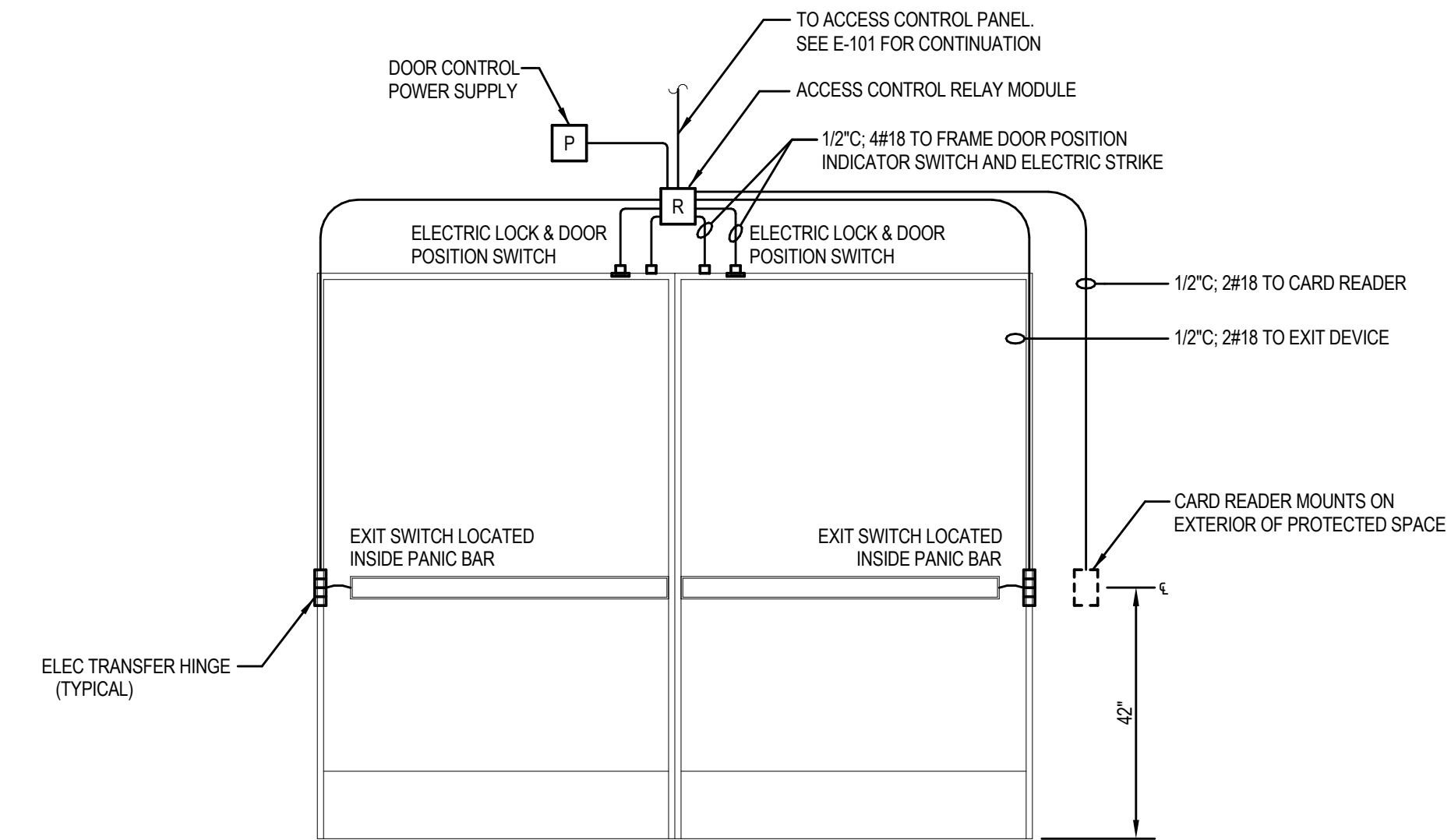


LUMINAIRE SCHEDULE										
TYPE	MANUFACTURER	CATALOG NUMBER	WATTS	SOURCE/MIN LUMENS	TEMPERATURE/CRI	DRIVER	VOLT	MOUNTING	LOCATION	DESCRIPTION
RA1	LITHONIA	2BLTBA4-85LHE-ADSM-EZ1-LP835	60 W	LED 8000 LUMENS	3500K 80 CRI MIN	LED DRIVER 0-10V DIMMING	UNV 120-277	RECESSED	ROTUNDA	RECESSED LED 2X4, LOW PROFILE WITH BOTTOM ACCESS
RA1E	LITHONIA	2BLTBA4-85LHE-ADSM-EZ1-LP835-E10WLCF	60 W	LED 8000 LUMENS	3500K 80 CRI MIN	LED DRIVER 0-10V DIMMING	UNV 120-277	RECESSED	ROTUNDA	RECESSED LED 2X4, LOW PROFILE WITH BOTTOM ACCESS PROVIDE WITH BATTERY PACK

Project: STA ROTUNDA											
3-PHASE PANEL SCHEDULE											
PANEL: 1LA											
Location: Electrical Room off Subway											
Date: 3/25/2025											
Ckt	Description	Phase	Amp	Poles	Notes	Ckt Totals	Specifications				
1	RECEPTS - SECURITY	A	20	1		0.9	Overcurrent Rating (Amps):	225			
3	RECEPTS	B	20	1		0.9	Voltage (L-L):	208			
5	RECEPTS	C	20	1		0.9	Phase:	3			
7	RECEPTS	A	20	1		0.9	Wire:	4			
9	RECEPTS	B	20	1		0.7	Bus Current Rating (Amps):	225			
11	COMPUTERS	C	20	1		1.2	Bus Material:	225A MCB			
13	COMPUTERS	A	20	1		0.9	Short Circuit Current Rating (Amps)	FULL			
15	RECEPTS - GFCI BY COMPACTOR DOOR	B	20	1		0.9	Main Type:				
17	ATMISTA TICKET	C	20	1		0.5	Neutral Type:				
19	RECEPTS	A	20	1		0.9	Mounting/End:	Surface			
21	RECEPTS - UFA OUTLET	B	20	1		0.9	2008 NEC Sections Used in Demand Calculations				
23	RECEPTS - FLOOR MOUNT	C	20	1		0.9	Factor #	NEC Reference	Notes		
25	RECEPTS	A	20	1		1.1	1	TBL 220.44	1st 10k @100%,		
27	RECEPTS	B	20	1		1.1		Receptacles ND	Remainder @50%		
29	RECEPTS	C	20	1		1.1	2	TBL 220.42	1st 20k @50%,		
31	RECEPTS	A	20	1		0.9		Apartments	20-100k @40%,		
33	JOES VEND. / FOUNT / CHARGE STATION	B	20	1		0.9		General Lighting	>100k @30%		
35	RECEPTS	C	20	1		0.7	3	430.24	Largest @125%		
37	RAMP MECH. MEZZ. SCU	A	20	1				Motors	Remainder @100%		
39	RAMP MECH. MEZZ. RECEP.	B	20	1			4	210.19(A)1 Cont Loads	125%		
41	SPARE	C	20	1			5	Non-Cont Loads	100%		
							6	220.51 Heating	100%		
<b>Feeder Load Breakdown</b>											
2	RECEPTS	A	20	1		1.1	Conn(KVA)	Dmd Fact			
4	RECEPTS	B	20	1		1.1	19.38	0.76			
6	REC - ESCALATOR	C	20	1		0.7	0.00	0.00			
8	R. SIDE CHARGE STATION	A	20	1		1.0	0.00	1.00			
10	UNKNOWN	B	20	1		1.1	0.00	1.25			
12	G-1 INTERACTIVE VIDEOESB	C	20	1		1.1	0.00	1.25			
14	RECEP	A	20	1		0.2	0.00	1.00			
16	FLOOR BOX (CONF TABLE)	B	20	1		0.4	0.00	1.00			
18	FLOOR BOX (SECURITY DESK)	C	20	1		0.2	0.00	0.25			
20	PRINTER	A	30	2		1.8	0.00	1.00			
22	-	B	-	-		-	0.00	1.00			
24	SPARE	C	20	1		-	0.00	1.00			
26	SPARE	A	20	1		-	0.00	1.00			
28	SPARE	B	20	1		-	0.00	1.00			
30	ESPRESSO	C	30	3		2.0	10.70	1.00			
32	-	A	-	-		2.0					
34	-	B	-	-		2.0					
<b>Connected Feeder Load Summary</b>											
36	SPACE	A					CONN KVA	CONN AMPS	NEC KVA	NEC AMPS	
38	SPACE	C					15.78	131.40	14.15	117.80	
40	SPACE	B					15.83	131.82	13.49	112.30	
42	SPACE	C					14.09	117.33	12.80	106.56	
							TOTAL:	45.70	126.85	48.43	112.22

Notes:  
1. UTILIZE EXISTING SPARE BREAKER. PROVIDE NEW PANEL SCHEDULE.  
2. PROVIDE NEW BREAKER NOTED. MATCH EXISTING TYPE AND RATING. CONTRACTOR TO CONFIRM PRINTER CONNECTION REQUIREMENTS AND REVISE RECEPTACLE, FEEDER, AND BREAKER PHASE/AMPS AS REQUIRED PRIOR TO INSTALL.

Panel Loading: ACCEPTABLE



1 TYPICAL DOUBLE DOOR ACCESS CONTROL DETAIL - CARD IN/FREE EXIT/MONITORED



221 N. Wall Street,  
Suite 500  
Spokane, WA 99201  
ph 509.328.2994  
www.coffman.com

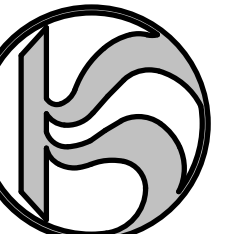


203 North Washington, Suite 400  
Spokane, WA 99201  
509.838.8568  
6500 Mineral Drive, Suite 101  
Coeur d'Alene, Idaho 83815  
208.676.5292  
alscarchitects.com



STA PLAZA 1ST FLOOR ROTUNDA  
TENANT IMPROVEMENT

Spokane Transit Authority  
1230 W. Boone Avenue  
Spokane, Washington 99201



REV	DATE	DESCRIPTION

PROJ. NO. 2025-11057  
DRAWN SLP  
CHECKED MBV  
DATE 03-28-2025

© COFFMAN ENGINEERS

SHEET TITLE:  
ELECTRICAL SCHEDULES AND DETAILS

SHEET NO:  
E-701  
SHEET OF

BID SET