

The Division Street Bus Rapid Transit (BRT) project will convert the existing Route 25 to BRT service, with new stations and roadway modifications that will provide faster, safer, and more reliable bus service. This summary highlights the features and opportunities relevant to future BRT stations.

This station will...



Support existing employment activity near the station, as well as potential future employment and ridership growth



Approximately 29% of households within a 0.25 mile walkshed of the project area are considered very low income

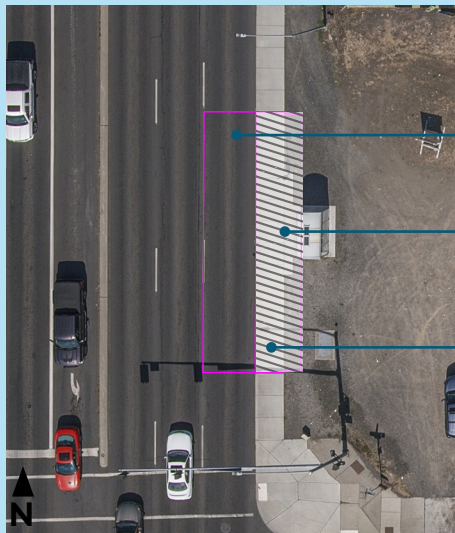


Update and improve the existing Route 25 bus stop at this intersection by adding amenities while considering the adjacent property and access needs



Improve frequency of access to nearby destinations such as Spokane View Apartments, Faith Bible Church, Fred's Appliance, Asian World Food Market, and nearby eateries

Station Features

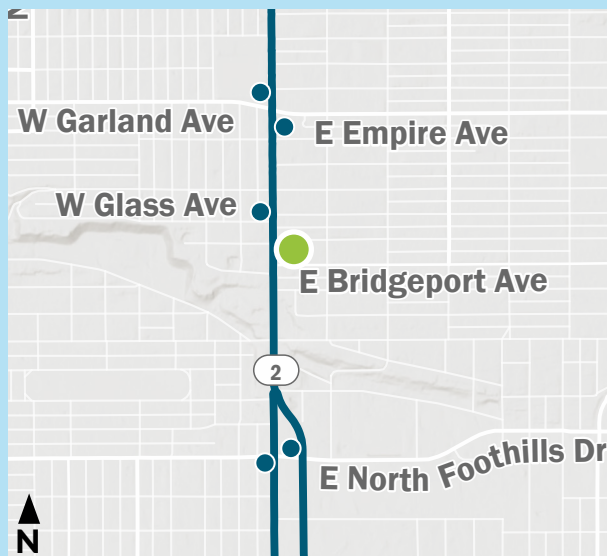


- In-lane bus pad
- Existing sidewalk integrated into the station design
- 11' x 60' bus platform

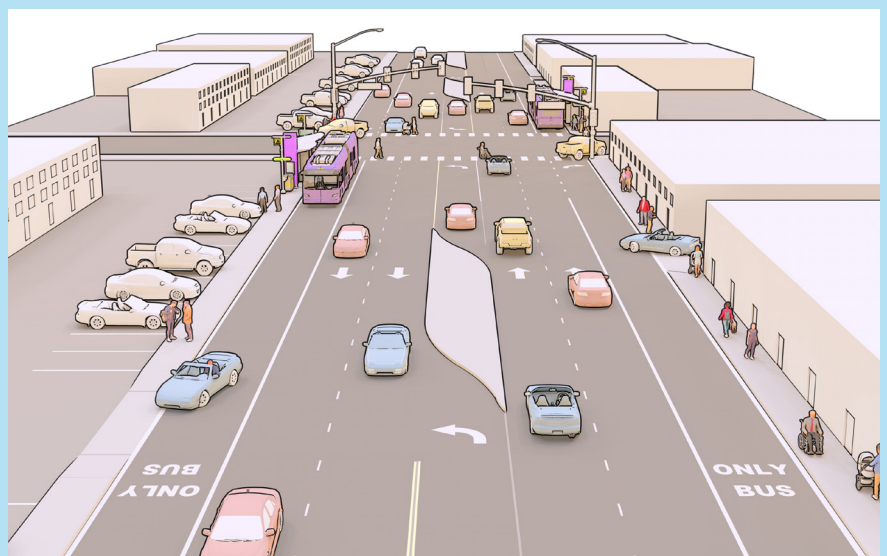
Draft station drawing - design in progress



Street view of the station location, looking north (Google Street View)



Division BRT alignment, North Foothills Dr to Garland/Empire Ave



Draft corridor rendering - Division at Price/Magnesium to Division/Ruby couplet - future condition

For more information, visit www.spokanetransit.com/divisionbrt or email divisionbrt@spokanetransit.com