

ADDENDUM NO. 1

PROJECT INFORMATION

Project Number: 2025-11135

Project Title: Route 7 HPT Improvements Phase 2

Project Location: Multiple Locations

Agency: Spokane Transit Authority

1.1 NOTICE TO BIDDERS

- A. The following clarifications, changes, additions, and/or deletions are considered as Addendum No. 1 and are hereby made a part of the contract documents. All bidders are required to base their bid upon the information furnished in this addendum and as required in the contract documents. The Contractor is required to acknowledge Addendum No. 1 in their company proposal. Failure to acknowledge addendum on the bid form will result in the bid proposal being declared non-responsive.
- B. All communications shall be directed to Josh Wood, as listed in the bid documents at jwood@spokanetransit.com or by telephone at 509-325-6070.
- C. **This concludes the question and answer period.** The bidder should use their best judgment as professionals in their field and err on the side of conservative for any questions, comments, errors, etc., found after such point.

1.2 REVISIONS/CLARIFICATIONS TO PLANS AND SPECIFICATIONS SECTIONS

- A. The bid opening date has been revised to **1:00 pm June 4, 2026**, Spokane Transit Authority located at 1230 W. Boone Ave. Spokane WA 99201.
- B. City of Spokane Valley bid item #B4: Indiana @ Valley Mall East Westbound and bid item #B5: Indiana @ Valley Mall East Eastbound have been removed from the project. Please adjust your bid accordingly.

1.3 QUESTIONS/ANSWERS (from the Pre-Bid Meeting, Emails, and Phone Calls)

Question 01: Is there an engineer's estimate?

Answer 01: The engineer's estimate is approximately \$512,511.

Question 02: I have a question regarding the schedule regarding total days from NTP. **Section 002100** in 1.1.B says contractor "shall complete the project within 90" **Section 003100** Project Schedule says "Substantial completion no later than ONE HUNDERED TWENTY (120) DAYS from" NTP **Section 004215** says "Bidder agrees to coordinate the completion of all Work within 120 Days of receipt of the Notice to Proceed." *Is it 90 days or 120 days from NTP?*

Answer 02: It is 120 days.

Question 03: Plan sheet E-301, Detail A, general notes and keyed notes contradict the supply of the surface mounted light fixture in the shelter. Who supplies the light fixture? Who is the fixture manufacturer and what is the part number? Is the shelter completely solar?

Answer 03: Shelter and shelter lighting is furnished/installed by STA, contractor provides wiring and final connection.

Question 04: Is there a bid bond required for this job?

Answer 04: Yes.

Question 05: Liquidated damages show \$XXXX.

Answer 05: Liquidated damages are \$170 per day.

Attachments:

Pre-bid Meeting Agenda, dated May 12, 2026. Attendance was optional.

Revised drawing sheet C-203

Revised drawing sheet E-202

Utility drawing request for information

Pre-Bid Meeting
Invitation For Bid 2025-11135
Route 7 HPT Improvements Phase 2

Agenda

DATE: Tuesday, May 12, 2026

TIME: 11:00 a.m. Pacific Time

LOCATION: Microsoft Teams

FACILITATOR: Josh Wood, Procurement Coordinator

1. INTRODUCTION OF SPOKANE TRANSIT AUTHORITY STAFF

2. GUIDELINES

- a. Attendance – please put your contact information in the chat or email jwood@spokanetransit.com
- b. Questions and answers at today’s meeting will be documented for issuing a written addendum.
- c. If an addendum is issued, all prospective Bidders who received the original IFB will receive the addendum along with those in attendance at today’s pre-bid meeting who provide STA with their contact information.
- d. In the event of a conflict between the answers provided in the meeting and the written addendum, the addendum shall prevail.
- e. Remarks, clarifications, or corrections to the IFB during the meeting shall not change the terms of the solicitation until an addendum is issued.
- f. Careful attention must be paid to all requirements of the IFB. Please read thoroughly and return all required forms, documentation, and information.

3. SCOPE OF WORK

- a. Summary – Ryan Brodwater – Project Manager
- b. Questions from Bidders

4. IMPORTANT NOTES & CLARIFICATIONS

- a. Verify your bid reflects the latest addenda to avoid disqualification.
- b. As a minimum requirement for a Bid to be deemed responsive, Bidders shall be properly and completely registered to do business within the State of Washington, including a UBI number.
- c. The project in its entirety qualifies as a “Public Road Work” as described in WAC 458-20-171(Rule 171).
- d. This public works project is subject to Washington State Prevailing Wage requirements and public works contracting requirements.
- e. Change Orders will be paid as Time & Material.

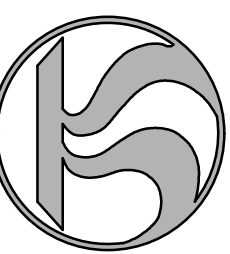
5. IFB TIMELINE AND NEXT STEPS

- a. Deadline to submit questions, requests for clarifications, or approved equals is 4:00 p.m. Pacific Time, May 21, 2026. This includes any redline changes to the sample agreement.
- b. Bids due by 1:00 p.m. Pacific Time, June 2, 2026, at Spokane Transit, 1230 W. Boone Ave, Spokane WA. 99201



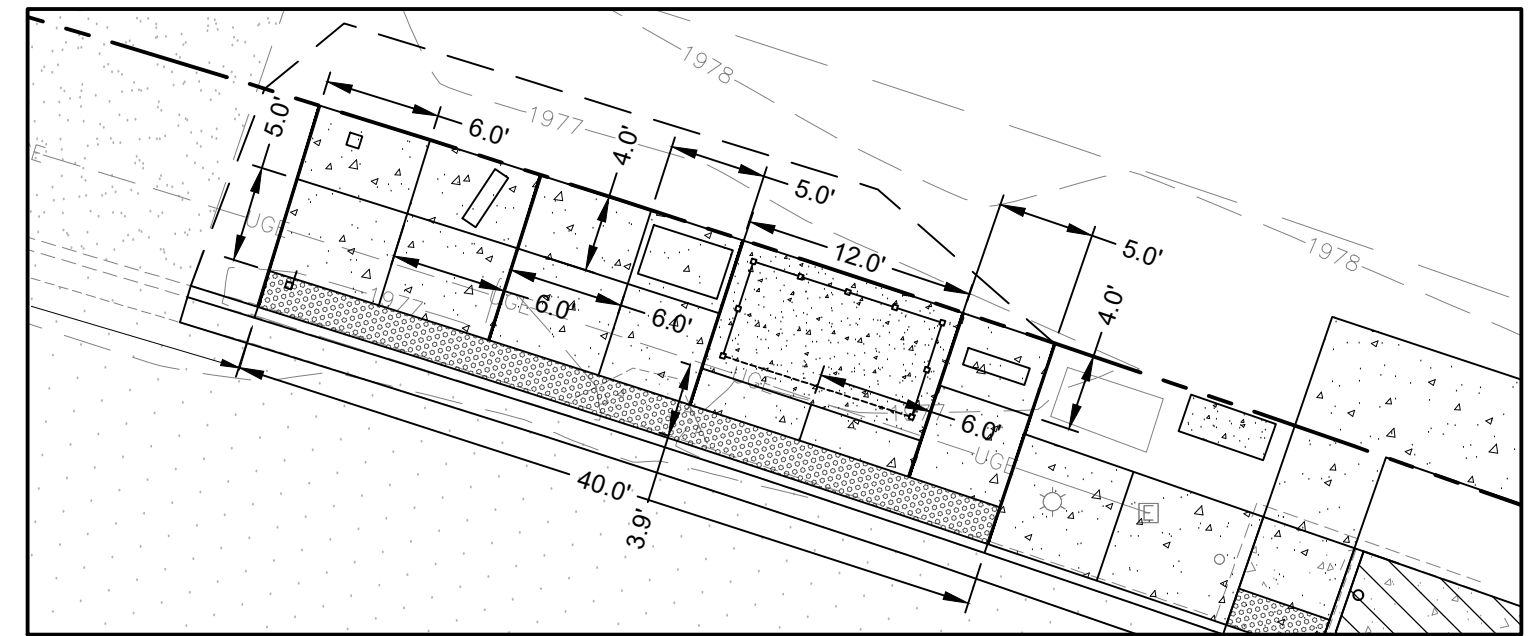
STA ROUTE 7 HPT - PHASE 2
SPOKANE VALLEY, WA
SPOKANE, WA - SPOKANE VALLEY, WA - LIBERTY LAKE, WA

Spokane Transit Authority
1230 W. Boone Avenue
Spokane, Washington 99201

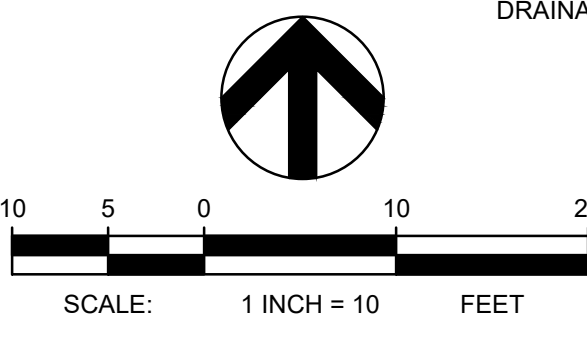
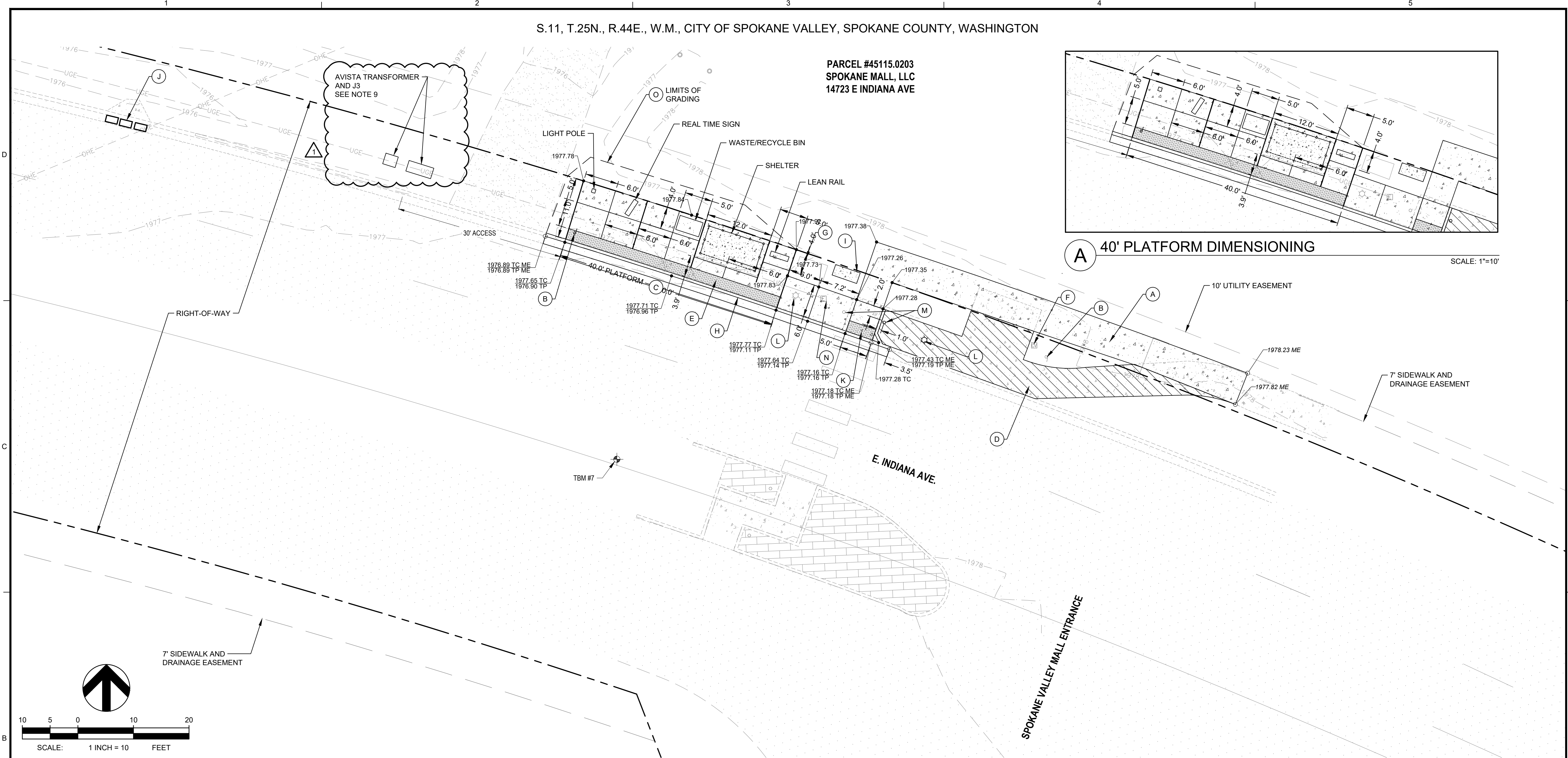


S.11, T.25N., R.44E., W.M., CITY OF SPOKANE VALLEY, SPOKANE COUNTY, WASHINGTON

PARCEL #45115.0203
SPOKANE MALL, LLC
14723 E INDIANA AVE



A 40' PLATFORM DIMENSIONING
SCALE: 1"=10'



TBM INFORMATION				
POINT #	NORTHING	EASTING	ELEVATION	DESCRIPTION
7	267656.83	2533597.72	1979.53	SET 3RBC
8*	267744.43	2533384.02	1976.58	SET X

* NOT SHOWN ON PLANS

BENCH MARK NOTE
CONTRACTOR SHALL PROTECT ALL EXISTING PROPERTY CORNERS AND BENCH MARKS. ANY DAMAGE CAUSED BY CONSTRUCTION ACTIVITIES SHALL BE REMEDIATED AT THE CONTRACTOR'S EXPENSE.

MONUMENT PRESERVATION NOTE
DISTURBING EXISTING SURVEY MONUMENTS (PROPERTY CORNERS OR KNOWN RECORDED MONUMENTS) IS A GROSS MISDEMEANOR PER RCW 58.04.015. CONTRACTOR SHALL PROTECT ALL EXISTING PROPERTY CORNERS. IF ANY MONUMENTS ARE IN AREAS THAT WILL BE DISTURBED, THE CONTRACTOR SHALL RETAIN A PROFESSIONAL LAND SURVEYOR TO FOLLOW WAC 332-120. ANY DAMAGE CAUSED BY CONSTRUCTION ACTIVITIES SHALL BE REMEDIATED AT THE CONTRACTOR'S EXPENSE.

LEGEND	
	CONCRETE SIDEWALK
	CONCRETE SHELTER FOUNDATION
	SHELTER AND SIDEWALK REMOVAL
	EXISTING CONTOUR
	PROPERTY LINE
	EASEMENT
	CURB
	SPOT ELEVATION
	GRADING LIMITS
	SAND BAGS

ABBREVIATIONS	
ME	MATCH EXISTING
TC	TOP OF CURB
TP	TOP OF PAVEMENT

- CONSTRUCTION NOTES**
- REFER TO SHEET C-100 FOR GENERAL NOTES.
 - PROPOSED CONCRETE SHALL MATCH ADJACENT EXISTING TOP BACK OF CURB AND SIDEWALK ELEVATIONS, WHERE APPLICABLE.
 - OBSTRUCTION PERMITS MUST BE OBTAINED FOR CONSTRUCTION IN THE CITY OF SPOKANE VALLEY PUBLIC RIGHT-OF-WAY. ALONG WITH THE TIME LIMITATIONS OF AN OBSTRUCTION PERMIT, REQUIREMENTS OF THIS PERMIT MAY ALSO INCLUDE TRAFFIC CONTROL MEASURES, WORK-HOUR TIME RESTRICTIONS, AND THE TYPE OF MATERIALS. COORDINATE REQUIREMENTS FOR TRAFFIC CONTROL WITH THE CITY OF SPOKANE VALLEY.
 - CONTRACTOR SHALL ADJUST/REVISE EXISTING IRRIGATION SYSTEM TO ACCOUNT FOR NEW CONCRETE IMPROVEMENTS. CONTRACTOR SHALL TEST ALL ADJUSTED/REVISED OR REPLACED IRRIGATION SYSTEMS TO CONFIRM THEY WORK PROPERLY WHEN DONE. COORDINATE WITH COSV STORMWATER DEPARTMENT OR PRIVATE IRRIGATION SYSTEM OWNER, WHICHEVER OPERATES THAT SITE'S SYSTEM.
 - PRIOR TO CONSTRUCTION, CONTRACTOR SHALL FIELD VERIFY THE EXACT LOCATION AND BURY DEPTH OF UNDERGROUND UTILITIES. IF THE BURY DEPTH DOES NOT MEET PURVEYORS STANDARDS, UTILITIES SHALL BE PROTECTED AND SLEEVED AND APPROVED BY UTILITY.
 - CONTRACTOR SHALL INSTALL SIGN POST, STA AND THEIR CREWS TO INSTALL SIGN.
 - CONTRACTOR SHALL INSTALL SAND BAGS AT CURB INLETS AND STORM DRAIN INLET PROTECTION (WSDOT I-40.20.00) AT GRATED INLET AS SHOWN ON PLANS.
 - WORK ON PRIVATE PROPERTY OUTSIDE OF RECORDED RIGHT-OF-WAY MAY NOT PROCEED WITHOUT THE ESTABLISHMENT OF A TEMPORARY CONSTRUCTION EASEMENT, OR SITE LICENSE AGREEMENT.
 - AVISTA PAD MOUNTED TRANSFORMER AND J3 OVER EXISTING UNDERGROUND PRIMARY LINE. CONTRACTOR TO COORDINATE PAD INSTALLATION AND EXACT LOCATION OF INFRASTRUCTURE WITH AVISTA DURING CONSTRUCTION. SEE ELECTRICAL DRAWINGS FOR MORE INFORMATION.

- KEY NOTES**
- REMOVE EXISTING SIDEWALK, GRASS AND TOP SOIL AS NEEDED FOR NEW SIDEWALK. INSTALL NEW CONCRETE SIDEWALK PER CITY OF SPOKANE VALLEY STANDARD R-103. REMOVE EXISTING SIDEWALK TO NEAREST JOINT.
 - REMOVE AND DISPOSE OF EXISTING SIGN POST AND STA SIGN. INSTALL NEW SIGN POST AND BASE PER DETAIL 11 AND 12, SHEET C-302. IN THE LOCATION SHOWN ON DETAIL 2, SHEET C-300.
 - REMOVE EXISTING CURB AND GUTTER, CURB INLET, GRASS AND TOP SOIL AND INSTALL HIGH PERFORMANCE TRANSIT STATION IMPROVEMENTS PER DETAIL 2, SHEET C-300, WITH UPDATED DIMENSIONING AS SHOWN ON DETAIL A. THIS SHEET, SEE DETAIL 5, SHEET C-301 FOR FOUNDATION PLAN FOR ALL IMPROVEMENTS RELATED TO STATION IMPROVEMENTS. SEE PLAN VIEW FOR ALTERATION OF STATION PLATFORM IMPROVEMENTS TO FIT 40' PLATFORM LENGTH, ADJUST FOUNDATIONS AND CONDUITS AS NEEDED.
 - REMOVE EXISTING CONCRETE SHELTER PAD AND SIDEWALK AS SHOWN BY CROSS HATCHING THAT IS NOT DIRECTLY IMPACTED BY NEW IMPROVEMENTS. REPLACE WITH NEW IRRIGATED SOD.
 - DETECTABLE WARNING STRIP TO BE INSTALLED AT BACK OF CURB ALONG PLATFORM FRONTAGE PER DETAIL 13, SHEET C-302.
 - PROTECT EXISTING IRRIGATION CONTROL BOX, SEE CONSTRUCTION NOTE 4.
 - PROTECT EXISTING COMMUNICATION BOX.
 - INSTALL CURB AND GUTTER HEIGHT PER PLAN, VARIES FROM 8" TO 9". CURB AND GUTTER SHALL CONFORM WITH CITY OF SPOKANE VALLEY STANDARD PLAN R-102, EXCEPT THE CURB REVEAL WILL BE 8" OR 9" INSTEAD OF 6".
 - INSTALL COMMUNICATION AND POWER CABINET FOUNDATIONS PER DETAIL 10, SHEET C-302.
 - INSTALL INLET PROTECTION, SEE CONSTRUCTION NOTE 7
 - INSTALL MODIFIED PARALLEL PEDESTRIAN RAMP PER CITY OF SPOKANE VALLEY STANDARD PLAN R-109. GEOMETRY OF RAMP TO VARY WITH ANGLED SIDEWALK AS SHOWN ON PLAN VIEW AND DELINEATED BY GRADING.
 - RELOCATE EXISTING LIGHT POLE AND HAND HOLE TO LOCATION SHOWN. SEE ELECTRICAL PLANS FOR MORE INFORMATION ON POWER CONNECTIONS. LIGHT POLE FOUNDATION SHALL CONFORM WITH DETAIL 14, SHEET C-302.
 - RELOCATE EXISTING RRFB. SEE ELECTRICAL PLANS FOR MORE INFORMATION ON RRFB POWER CONNECTION. INSTALL NEW RRFB FOUNDATION PER DETAIL 18, SHEET C-303
 - ADJUST EXISTING ELECTRICAL STRUCTURE AS NEEDED TO MATCH PROPOSED CONCRETE SIDEWALK GRADES. PROVIDE SKID RESISTANT LIDS FOR ANY UTILITIES WITHIN THE CONCRETE SIDEWALKS/BUS STOP PAD.
 - REGRADE FROM TOP OF NEW CONCRETE TO EXISTING GRADE AT MAXIMUM 3:1 SLOPE. MATERIAL FOR REGRADING SHALL BE GRAVEL BORROW MEETING REQUIREMENTS OF WSDOT STANDARD SPEC 9-03.14 (1), OR APPROVED EQUAL.

THE EXISTING INFORMATION SHOWN ON THESE PLANS IS PER THE SURVEY COMPLETED BY:
COFFMAN ENGINEERS
221 N WALL ST #500
SPOKANE, WA 99201
(509) 328-2994
DATED: DEC. 2025
THE CONTRACTOR SHALL VERIFY EXISTING SITE CONDITIONS AND CONTACT THE ENGINEER IF DISCREPANCIES ARE NOTED.

UTILITY STATEMENT
LOCATION OF EXISTING UNDERGROUND UTILITIES HAVE BEEN TAKEN FROM DRAWINGS AND FIELD LOCATES SUPPLIED BY THE APPROPRIATE UTILITY COMPANIES. UTILITY LOCATIONS SHOWN ON THIS DRAWING ARE APPROXIMATE ONLY. PRIOR TO BEGINNING ANY CONSTRUCTION, THE CONTRACTOR SHALL VERIFY THE EXACT LOCATION OF EACH UTILITY.



Know what's below.
Call before you dig.

P:\SPD\250305\25081 STA ROUTE 7 HPT - PHASE 2\INDIANA VALLEY MALL DWG\INDIANA AVE & VALLEY MALL - WB - WIEGAND, BRADY - LAST SAVED: May 28, 2026 - PLOT DATE: 5/28/26

REV	DATE	DESCRIPTION
1	5/28/26	ADD 1

PROJ. NO. 2025-11086
DRAWN KCM
CHECKED BLW
DATE 04/21/2026

© COFFMAN ENGINEERS INC.

SHEET TITLE:
INDIANA AVE & VALLEY MALL - WB

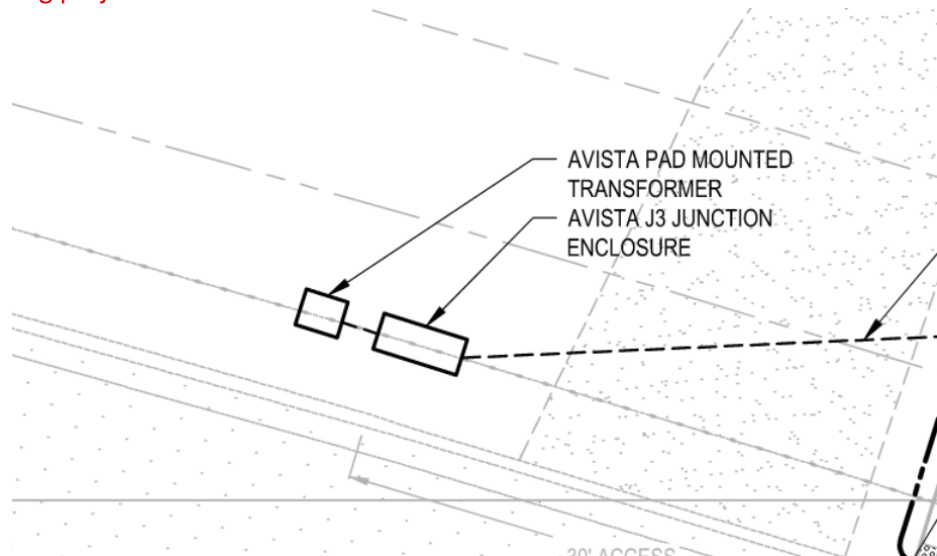
SHEET NO:
C-203
SHEET

1. Are there utility drawings that we can reference?

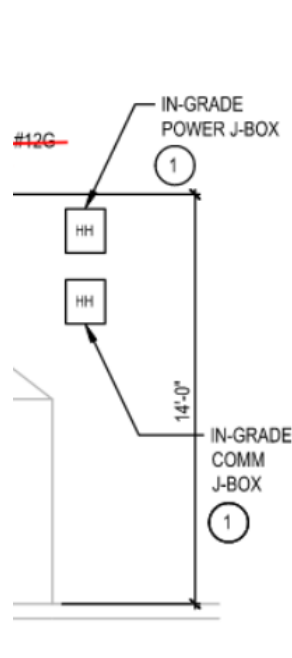
Questions Concerning utility scope.

- Does AVISTA provide pad mounted transformer? **Correct.**

- Where does the primary feed for this come from? **Pads located on existing underground primary feed. Contractor to install pads for Transformer and J3. Avista to install Transformer and make primary electrical connections. Contractor to install secondary electrical line. Contractor to coordinate final locations of Avista Transformer and J3, along with pad requirements, with utility during project.**



2. Can you provide a conduit schedule for the (2) hand holes (in grade power J-box and In grade COMM J-box) sheet 300 detail B-1. **Hand Holes not included for this project, please disregard.**



3. Please provide specifications for power supply, diming control, and marker luminaires.

Sheet #-300 detail A1. **All requested information included by owner furnished light pole manufacturer.**

4. Please confirm who furnishes the HPT pedestrian light poles, pole manufacturer hardware, anchor bolts, LED fixtures, and fixture mounting brackets. Electrical detail appears to identify the pole and anchor bolts as OFCI, while Exhibit B notes fixtures and brackets supplied by others. Please provide specification detail and mounting bracket. VIA future system plans A1, 1 of 7 note "banner supplied by others" confirming others would be city or governing agency. **Station Light pole, cabinets, real time sign, and all associated hardware with these items to be furnished by STA for contractor installation. Details for connection of these items to contractor installed foundations listed on electrical and civil plans provided.**

5. Conflicting information between drawing sheets.

Drawing C-203 – Keynote I indicates locations of communication and power cabinet footings. These details conflict with drawing E-202 detail A1.

Please clarify correct location for cabinets. **Civil and Electrical plans updated to correct discrepancy. See revision 1 to corresponding drawings.**

